

For Research Use Only

CEPT1 Polyclonal antibody, PBS Only

Catalog Number: 20496-1-PBS

Featured Product



Basic Information

Catalog Number:

20496-1-PBS

Size:

100ug, Concentration: 1 mg/ml by Nanodrop;

Source:

Rabbit

Isotype:

IgG

Immunogen Catalog Number:

AG14140

GenBank Accession Number:

BC032610

GeneID (NCBI):

10390

UNIPROT ID:

Q9Y6KO

Full Name:

choline/ethanolamine phosphotransferase 1

Calculated MW:

416 aa, 47 kDa

Purification Method:

Antigen affinity purification

Applications

Tested Applications:

IHC, IF/ICC, Indirect ELISA

Species Specificity:

human

Background Information

Choline-ethanolamine phosphotransferase 1 (CEPT1) is a 47-kDa membrane-bound protein that catalyzes the terminal step of the Kennedy pathway. CEPT1 is encoded by the Cept1 gene and is responsible for phosphatidylcholine (PC) and phosphatidylethanolamine (PE) production (PMID: 33214136, 30030520).

Storage

Storage:

Store at -80°C.

Storage Buffer:

PBS only, pH7.3

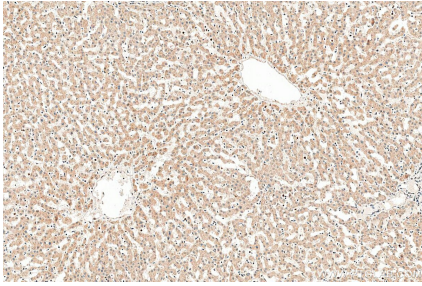
For technical support and original validation data for this product please contact:

T: 1 (888) 4PTGLAB (1-888-478-4522) (toll free in USA), or 1(312) 455-8498 (outside USA)

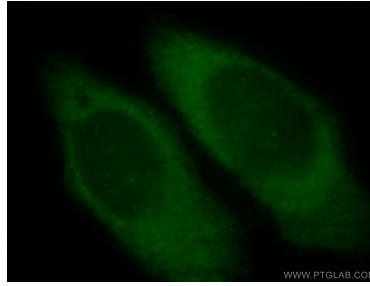
E: proteintech@ptglab.com
W: ptglab.com

This product is exclusively available under Proteintech Group brand and is not available to purchase from any other manufacturer.

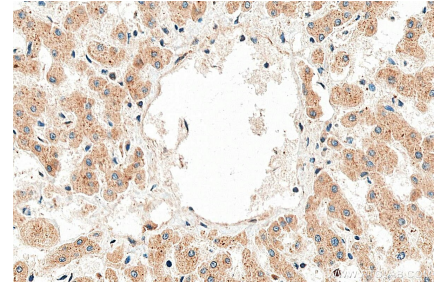
Selected Validation Data



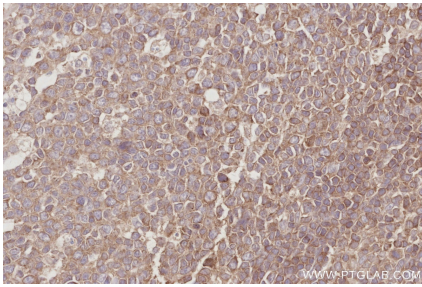
Immunohistochemical analysis of paraffin-embedded human liver tissue slide using 20496-1-AP (CEPT1 antibody) at dilution of 1:400 (under 10x lens). Heat mediated antigen retrieval with Tris-EDTA buffer (pH 9.0). This data was developed using the same antibody clone with 20496-1-PBS in a different storage buffer formulation.



Immunofluorescent analysis of HepG2 cells, using CEPT1 antibody 20496-1-AP at 1:25 dilution and FITC- labeled goat anti-Rabbit IgG (green). This data was developed using the same antibody clone with 20496-1-PBS in a different storage buffer formulation.



Immunohistochemical analysis of paraffin-embedded human liver tissue slide using 20496-1-AP (CEPT1 antibody) at dilution of 1:400 (under 40x lens). Heat mediated antigen retrieval with Tris-EDTA buffer (pH 9.0). This data was developed using the same antibody clone with 20496-1-PBS in a different storage buffer formulation.



Immunohistochemical analysis of paraffin-embedded human tonsillitis tissue slide using 20496-1-AP (CEPT1 antibody) at dilution of 1:1000 (under 40x lens). Heat mediated antigen retrieval with Tris-EDTA buffer (pH 9.0). This data was developed using the same antibody clone with 20496-1-PBS in a different storage buffer formulation.