

For Research Use Only

STARD3NL Polyclonal antibody

Catalog Number: 20502-1-AP

Featured Product

1 Publications



Basic Information

Catalog Number:

20502-1-AP

Size:

150ul, Concentration: 900 ug/ml by Nanodrop;

Source:

Rabbit

Isotype:

IgG

Immunogen Catalog Number:

AG14273

GenBank Accession Number:

BC005959

GeneID (NCBI):

83930

UNIPROT ID:

O95772

Full Name:

STARD3 N-terminal like

Calculated MW:

234 aa, 27 kDa

Observed MW:

27 kDa

Purification Method:

Antigen affinity purification

Recommended Dilutions:

WB 1:1000-1:4000

IP 0.5-4.0 ug for 1.0-3.0 mg of total protein lysate

IHC 1:50-1:500

IF/ICC 1:300-1:1200

Applications

Tested Applications:

WB, IHC, IF/ICC, IP, ELISA

Cited Applications:

WB

Species Specificity:

human, mouse, rat

Cited Species:

human, mouse

Note-IHC: suggested antigen retrieval with TE buffer pH 9.0; (*) Alternatively, antigen retrieval may be performed with citrate buffer pH 6.0

Positive Controls:

WB : U2OS cells, HEK-293 cells, mouse kidney tissue

IP : HEK-293 cells,

IHC : human breast cancer tissue,

IF/ICC : U2OS cells,

Notable Publications

Author	Pubmed ID	Journal	Application
Yuxin Xu	35098646	J Cell Mol Med	WB

Storage

Storage:

Store at -20°C. Stable for one year after shipment.

Storage Buffer:

PBS with 0.02% sodium azide and 50% glycerol pH 7.3.

Aliquoting is unnecessary for -20°C storage

*** 20ul sizes contain 0.1% BSA

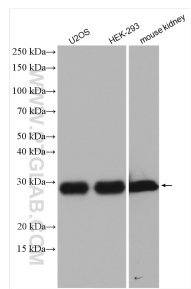
For technical support and original validation data for this product please contact:

T: 1 (888) 4PTGLAB (1-888-478-4522) (toll free in USA), or 1(312) 455-8498 (outside USA)

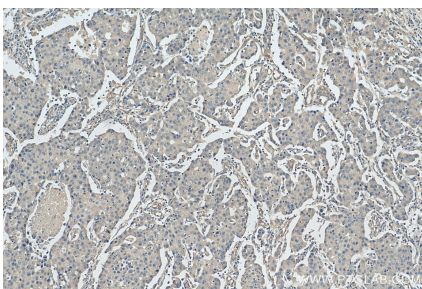
E: proteintech@ptglab.com
W: ptglab.com

This product is exclusively available under Proteintech Group brand and is not available to purchase from any other manufacturer.

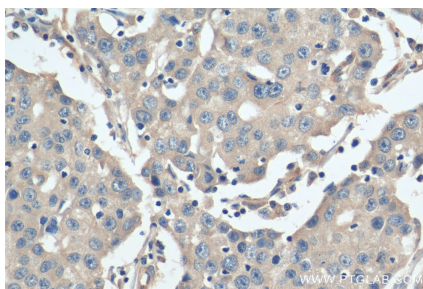
Selected Validation Data



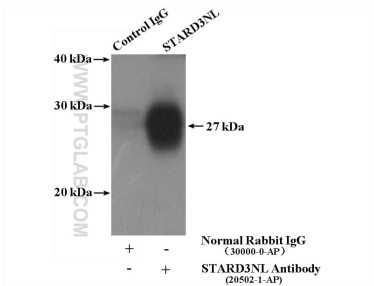
Various lysates were subjected to SDS PAGE followed by western blot with 20502-1-AP (STARD3NL antibody) at dilution of 1:2000 incubated at room temperature for 1.5 hours.



Immunohistochemical analysis of paraffin-embedded human breast cancer tissue slide using 20502-1-AP (STARD3NL antibody) at dilution of 1:200 (under 10x lens). Heat mediated antigen retrieval with Tris-EDTA buffer (pH 9.0).



Immunohistochemical analysis of paraffin-embedded human breast cancer tissue slide using 20502-1-AP (STARD3NL antibody) at dilution of 1:200 (under 40x lens). Heat mediated antigen retrieval with Tris-EDTA buffer (pH 9.0).



IP result of anti-STARD3NL (IP:20502-1-AP, 4ug; Detection:20502-1-AP 1:500) with HEK-293 cells lysate 3200ug.



Immunofluorescent analysis of (-20°C Methanol) fixed U2OS cells using STARD3NL antibody (20502-1-AP) at dilution of 1:600 and CoraLite®488-Conjugated AffiniPure Goat Anti-Rabbit IgG(H+L) (SA00013-2).