

For Research Use Only

ARMC10 Polyclonal antibody

Catalog Number: 20506-1-AP

2 Publications



Basic Information

Catalog Number:

20506-1-AP

Size:

150ul, Concentration: 350 µg/ml by Nanodrop and 200 µg/ml by Bradford method using BSA as the standard;

Source:

Rabbit

Isotype:

IgG

Immunogen Catalog Number:

AG14313

GenBank Accession Number:

BC003586

GeneID (NCBI):

83787

Full Name:

armadillo repeat containing 10

Calculated MW:

343 aa, 38 kDa

Observed MW:

31-37 kDa

Purification Method:

Antigen affinity purification

Recommended Dilutions:

WB 1:500-1:3000

IP 0.5-4.0 µg for IP and 1:500-1:1000

for WB

IHC 1:20-1:200

IF 1:50-1:500

Applications

Tested Applications:

IF, IHC, IP, WB, ELISA

Cited Applications:

IP, WB

Species Specificity:

human, mouse, rat

Cited Species:

human

Note-IHC: suggested antigen retrieval with TE buffer pH 9.0; (*) Alternatively, antigen retrieval may be performed with citrate buffer pH 6.0

Positive Controls:

WB : A431 cells, HEK-293 cells, HepG2 cells, mouse brain tissue, mouse liver tissue

IP : A431 cells,

IHC : human placenta tissue,

IF : HepG2 cells, A431 cells

Background Information

Notable Publications

Author	Pubmed ID	Journal	Application
Tian-Hao Li	37842592	Heliyon	WB
R Serrat	24722288	Cell Death Dis	WB,IP

Storage

Storage:

Store at -20°C. Stable for one year after shipment.

Storage Buffer:

PBS with 0.02% sodium azide and 50% glycerol pH 7.3.

Aliquoting is unnecessary for -20°C storage

*** 20ul sizes contain 0.1% BSA

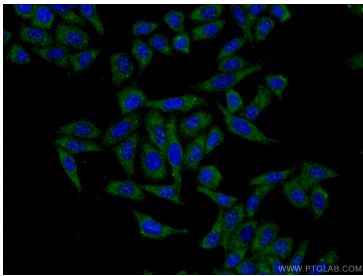
For technical support and original validation data for this product please contact:

T: 1 (888) 4PTGLAB (1-888-478-4522) (toll free in USA), or 1(312) 455-8498 (outside USA)

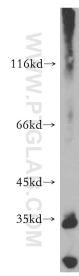
E: proteintech@ptglab.com
W: ptglab.com

This product is exclusively available under Proteintech Group brand and is not available to purchase from any other manufacturer.

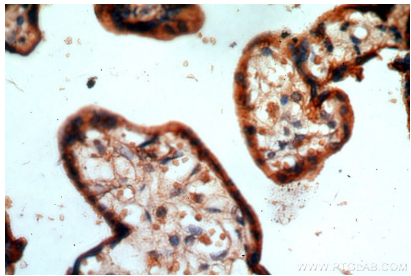
Selected Validation Data



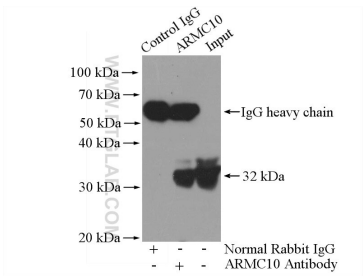
Immunofluorescent analysis of (-20°C Ethanol) fixed HepG2 cells using 20506-1-AP (ARMC10 antibody) at dilution of 1:100 and CoraLite488-Conjugated AffiniPure Goat Anti-Rabbit IgG(H+L).



A431 cells were subjected to SDS PAGE followed by western blot with 20506-1-AP (ARMC10 antibody) at dilution of 1:500 incubated at room temperature for 1.5 hours.



Immunohistochemical analysis of paraffin-embedded human placenta using 20506-1-AP (ARMC10 antibody) at dilution of 1:100 (under 40x lens).



IP Result of anti-ARMC10 (IP:20506-1-AP, 4ug; Detection:20506-1-AP 1:500) with A431 cells lysate 1600ug.