

For Research Use Only

PPPDE1/PNAS4 Polyclonal antibody

Catalog Number: 20517-1-AP

Featured Product

7 Publications



Basic Information

Catalog Number:

20517-1-AP

Size:

150ul, Concentration: 240 ug/ml by Nanodrop and 133 ug/ml by Bradford method using BSA as the standard;

Source:

Rabbit

Isotype:

IgG

Immunogen Catalog Number:

AG14352

GenBank Accession Number:

BC004485

GeneID (NCBI):

51029

UNIPROT ID:

Q9BSY9

Full Name:

PPPDE peptidase domain containing 1

Calculated MW:

194 aa, 21 kDa

Observed MW:

23 kDa

Purification Method:

Antigen affinity purification

Recommended Dilutions:

WB 1:300-1:600
IP 0.5-4.0 ug for 1.0-3.0 mg of total protein lysate
IHC 1:20-1:200
IF/ICC 1:10-1:100

Applications

Tested Applications:

WB, IHC, IF/ICC, IP, ELISA

Cited Applications:

WB, IHC, IF

Species Specificity:

human

Cited Species:

human, mouse, rat

Positive Controls:

WB : HeLa cells, NCI-H1299 cells, A549 cells, U-251 cells

IP : A549 cells,

IHC : human lung cancer tissue,

IF/ICC : HepG2 cells,

Note-IHC: suggested antigen retrieval with TE buffer pH 9.0; (*) Alternatively, antigen retrieval may be performed with citrate buffer pH 6.0

Background Information

PPPDE peptidase domain 1 (PPPDE1), also named as PNAS4, is a highly conserved gene ubiquitously expressed in various tissues. PPPDE1 has been identified as a novel pro-apoptotic gene activated during the early response to DNA damage which is thought to play a critical role in cellular function regarding the maintenance of genomic integrity. This antibody specifically recognized endogenous PPPDE1, which has been confirmed by siRNA test.

Notable Publications

Author	Pubmed ID	Journal	Application
Yu-Huan Kang	25120694	Oncol Lett	IHC
Xingwang Xie	30426280	Apoptosis	WB
Xingwang Xie	28483520	Biochem Biophys Res Commun	WB

Storage

Storage:

Store at -20°C. Stable for one year after shipment.

Storage Buffer:

PBS with 0.02% sodium azide and 50% glycerol pH 7.3.

Aliquoting is unnecessary for -20°C storage

*** 20ul sizes contain 0.1% BSA

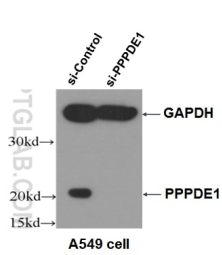
For technical support and original validation data for this product please contact:

T: 1 (888) 4PTGLAB (1-888-478-4522) (toll free in USA), or 1(312) 455-8498 (outside USA)

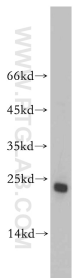
E: proteintech@ptglab.com
W: ptglab.com

This product is exclusively available under Proteintech Group brand and is not available to purchase from any other manufacturer.

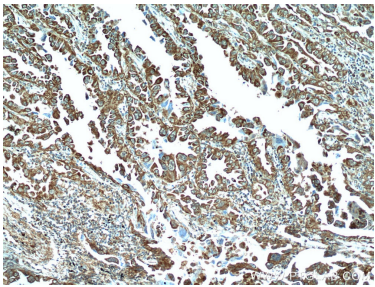
Selected Validation Data



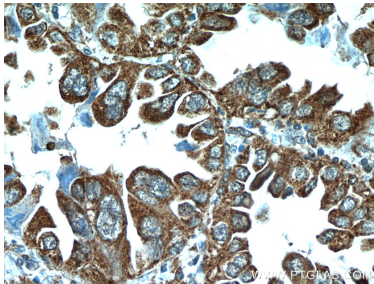
WB result of PPPDE1 antibody (20517-1-AP, 1:1000) with A549 cells transfected with si-control and si-PPPDE1.



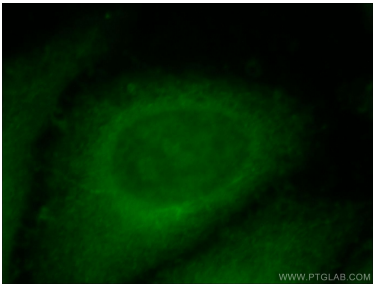
HeLa cells were subjected to SDS PAGE followed by western blot with 20517-1-AP (PPPDE1/PNAS4 antibody) at dilution of 1:500 incubated at room temperature for 1.5 hours.



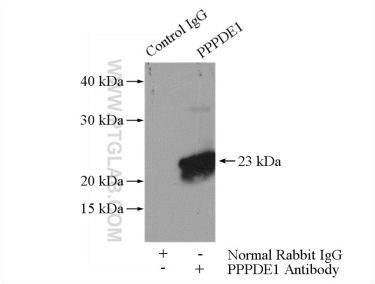
Immunohistochemical analysis of paraffin-embedded human lung cancer using 20517-1-AP (PPPDE1/PNAS4 antibody) at dilution of 1:50 (under 10x lens).



Immunohistochemical analysis of paraffin-embedded human lung cancer using 20517-1-AP (PPPDE1/PNAS4 antibody) at dilution of 1:50 (under 40x lens).



Immunofluorescent analysis of HepG2 cells, using PPPDE1 antibody 20517-1-AP at 1:25 dilution and FITC-labeled goat anti-Rabbit IgG (green).



IP result of anti-PPPDE1/PNAS4 (IP:20517-1-AP, 4ug; Detection:20517-1-AP 1:500) with A549 cells lysate 2800ug.