

For Research Use Only

FAM164C Polyclonal antibody

Catalog Number: 20520-1-AP



Basic Information

Catalog Number:

20520-1-AP

Size:

150ul, Concentration: 750 ug/ml by Nanodrop and 460 ug/ml by Bradford method using BSA as the standard;

Source:

Rabbit

Isotype:

IgG

Immunogen Catalog Number:

AG14359

GenBank Accession Number:

BC004259

GeneID (NCBI):

79696

UNIPROT ID:

Q53FDO

Full Name:

family with sequence similarity 164, member C

Calculated MW:

275 aa, 31 kDa

Observed MW:

31-36 kDa

Purification Method:

Antigen affinity purification

Recommended Dilutions:

WB 1:500-1:2000

IHC 1:20-1:200

IF/ICC 1:10-1:100

Applications

Tested Applications:

WB, IHC, IF/ICC, ELISA

Species Specificity:

human, rat

Note-IHC: suggested antigen retrieval with TE buffer pH 9.0; (*) Alternatively, antigen retrieval may be performed with citrate buffer pH 6.0

Positive Controls:

WB : HeLa cells, C6 cells

IHC : human kidney tissue, human testis tissue

IF/ICC : C6 cells,

Background Information

FAM164C, also named as ZC2HC1C or C14orf140, is a 456 amino acid protein, which contains one C2HC-type zinc finger and belongs to the ZC2HC1 family. FAM164C exists as two isoforms. The isoform1 is a 51kDa protein and isoform2 is 31kDa.

Storage

Storage:

Store at -20°C. Stable for one year after shipment.

Storage Buffer:

PBS with 0.02% sodium azide and 50% glycerol pH 7.3.

Aliquoting is unnecessary for -20°C storage

*** 20ul sizes contain 0.1% BSA

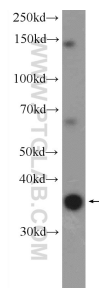
For technical support and original validation data for this product please contact:

T: 1 (888) 4PTGLAB (1-888-478-4522) (toll free in USA), or 1(312) 455-8498 (outside USA)

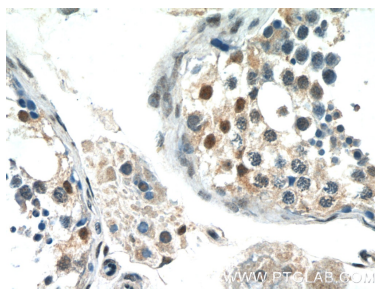
E: proteintech@ptglab.com
W: ptglab.com

This product is exclusively available under Proteintech Group brand and is not available to purchase from any other manufacturer.

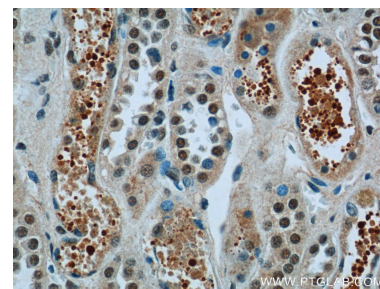
Selected Validation Data



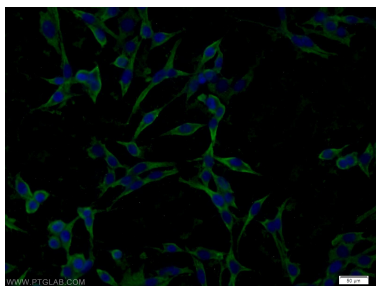
HeLa cells were subjected to SDS PAGE followed by western blot with 20520-1-AP (FAM164C Antibody) at dilution of 1:1000 incubated at room temperature for 1.5 hours.



Immunohistochemical analysis of paraffin-embedded human testis tissue slide using 20520-1-AP (FAM164C Antibody) at dilution of 1:50 (under 40x lens).



Immunohistochemical analysis of paraffin-embedded human kidney tissue slide using 20520-1-AP (FAM164C Antibody) at dilution of 1:50 (under 40x lens).



Immunofluorescent analysis of C6 cells using 20520-1-AP (FAM164C antibody) at dilution of 1:25 and Alexa Fluor 488-conjugated Goat Anti-Rabbit IgG(H+L).