

For Research Use Only

# IL-20RB Polyclonal antibody

Catalog Number: 20521-1-AP

2 Publications



## Basic Information

Catalog Number:

20521-1-AP

Size:

150ul, Concentration: 450 ug/ml by Nanodrop;

Source:

Rabbit

Isotype:

IgG

Immunogen Catalog Number:

AG14368

GenBank Accession Number:

BC033292

GeneID (NCBI):

53833

UNIPROT ID:

Q6UXLO

Full Name:

interleukin 20 receptor beta

Calculated MW:

311 aa, 35 kDa

Observed MW:

35 kDa

Purification Method:

Antigen affinity purification

Recommended Dilutions:

WB 1:500-1:1000

## Applications

Tested Applications:

WB, ELISA

Cited Applications:

WB, IF

Species Specificity:

human

Cited Species:

human, mouse

Positive Controls:

WB : human testis tissue,

## Background Information

Interleukin-20 receptor subunit beta (IL20RB) is a single-pass type I membrane protein of the type II cytokine receptor family. The interleukin-20-receptor I complex (IL-20-RI) is composed of two chains, IL20RA and IL20RB. IL-20-RI is a receptor for IL-19, IL-20 and IL-24. IL20RB can also form a heterodimer with IL22RA1. The IL22RA1/IL20RB dimer is a receptor for IL20 and IL24.

## Notable Publications

Author	Pubmed ID	Journal	Application
Xiao-Hui Li	38098005	J Transl Med	WB,IF
Yuge Gao	37822943	Front Immunol	FC

## Storage

Storage:

Store at -20°C. Stable for one year after shipment.

Storage Buffer:

PBS with 0.02% sodium azide and 50% glycerol pH 7.3.

Aliquoting is unnecessary for -20°C storage

\*\*\* 20ul sizes contain 0.1% BSA

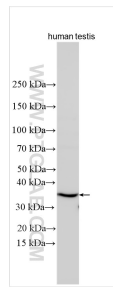
For technical support and original validation data for this product please contact:

T: 1 (888) 4PTGLAB (1-888-478-4522) (toll free in USA), or 1(312) 455-8498 (outside USA)

E: [proteintech@ptglab.com](mailto:proteintech@ptglab.com)  
W: [ptglab.com](http://ptglab.com)

This product is exclusively available under Proteintech Group brand and is not available to purchase from any other manufacturer.

## Selected Validation Data



Various lysates were subjected to SDS PAGE followed by western blot with 20521-1-AP (IL-20RB antibody) at dilution of 1:500 incubated at room temperature for 1.5 hours.