

For Research Use Only

ZXDC Polyclonal antibody

Catalog Number: 20530-1-AP **2 Publications**



Basic Information

Catalog Number: 20530-1-AP	GenBank Accession Number: BC002940	Purification Method: Antigen affinity purification
Size: 150ul , Concentration: 350 µg/ml by Nanodrop and 320 µg/ml by Bradford method using BSA as the standard;	GeneID (NCBI): 79364	Recommended Dilutions: WB 1:500-1:1000 IF 1:10-1:100
Source: Rabbit	Full Name: ZXD family zinc finger C	
Isotype: IgG	Calculated MW: 858 aa, 90 kDa	
Immunogen Catalog Number: AG14392	Observed MW: 70-75 kDa	

Applications

Tested Applications: IF, WB, ELISA	Positive Controls:
Cited Applications: IF, IHC, WB	WB : human kidney tissue, A431 cells, HEK-293 cells, mouse kidney tissue
Species Specificity: human, mouse	IF : HeLa cells,
Cited Species: human, mouse	

Background Information

Notable Publications

Author	Pubmed ID	Journal	Application
Jiexiang Zhao	34824237	Nat Commun	IF
Yifang Mao	37599824	iScience	WB,IHC

Storage

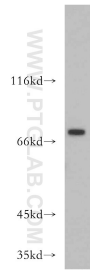
Storage:
Store at -20°C. Stable for one year after shipment.
Storage Buffer:
PBS with 0.02% sodium azide and 50% glycerol pH 7.3.
Aliquoting is unnecessary for -20°C storage

***** 20ul sizes contain 0.1% BSA**

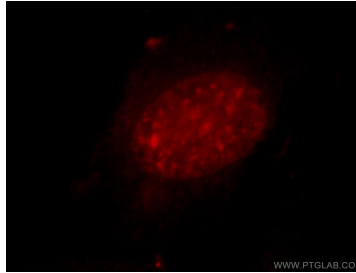
For technical support and original validation data for this product please contact:
T: 1 (888) 4PTGLAB (1-888-478-4522) (toll free in USA), or 1(312) 455-8498 (outside USA)
E: proteintech@ptglab.com
W: ptglab.com

This product is exclusively available under Proteintech Group brand and is not available to purchase from any other manufacturer.

Selected Validation Data



human kidney tissue were subjected to SDS PAGE followed by western blot with 20530-1-AP (ZXDC antibody) at dilution of 1:300 incubated at room temperature for 1.5 hours.



Immunofluorescent analysis of HeLa cells, using ZXDC antibody 20530-1-AP at 1:25 dilution and Rhodamine-labeled goat anti-rabbit IgG (red).