

For Research Use Only

# EFS Polyclonal antibody

Catalog Number: 20538-1-AP

2 Publications



## Basic Information

Catalog Number:

20538-1-AP

Size:

150ul, Concentration: 900 ug/ml by Nanodrop;

Source:

Rabbit

Isotype:

IgG

Immunogen Catalog Number:

AG14565

GenBank Accession Number:

BC034246

GeneID (NCBI):

10278

UNIPROT ID:

O43281

Full Name:

embryonal Fyn-associated substrate

Calculated MW:

561 aa, 59 kDa

Observed MW:

80-90 kDa, 67-70 kDa

Purification Method:

Antigen affinity purification

Recommended Dilutions:

WB 1:300-1:1000

IP 0.5-4.0 ug for 1.0-3.0 mg of total protein lysate

IHC 1:50-1:500

IF/ICC 1:10-1:100

## Applications

Tested Applications:

WB, IHC, IF/ICC, IP, ELISA

Cited Applications:

WB

Species Specificity:

human, mouse, rat

Cited Species:

human

**Note-IHC: suggested antigen retrieval with TE buffer pH 9.0; (\*) Alternatively, antigen retrieval may be performed with citrate buffer pH 6.0**

Positive Controls:

WB : mouse thymus tissue, human placenta tissue

IP : mouse thymus tissue,

IHC : human spleen tissue,

IF/ICC : HepG2 cells,

## Notable Publications

Author	Pubmed ID	Journal	Application
Tingting Hu	35360840	Front Genet	WB
Xuena Yang	39369662	Ecotoxicol Environ Saf	WB

## Storage

Storage:

Store at -20°C. Stable for one year after shipment.

Storage Buffer:

PBS with 0.02% sodium azide and 50% glycerol pH 7.3.

Aliquoting is unnecessary for -20°C storage

\*\*\* 20ul sizes contain 0.1% BSA

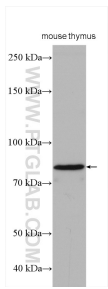
For technical support and original validation data for this product please contact:

T: 1 (888) 4PTGLAB (1-888-478-4522) (toll free in USA), or 1(312) 455-8498 (outside USA)

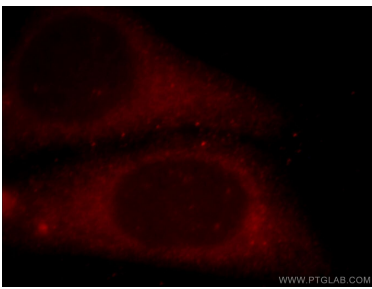
E: [proteintech@ptglab.com](mailto:proteintech@ptglab.com)  
W: [ptglab.com](http://ptglab.com)

This product is exclusively available under Proteintech Group brand and is not available to purchase from any other manufacturer.

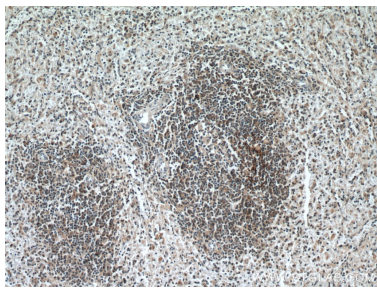
Selected Validation Data



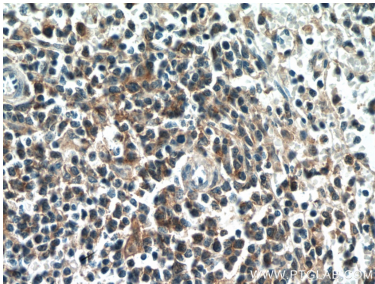
mouse thymus tissue were subjected to SDS PAGE followed by western blot with 20538-1-AP (EFS antibody) at dilution of 1:1000 incubated at room temperature for 1.5 hours.



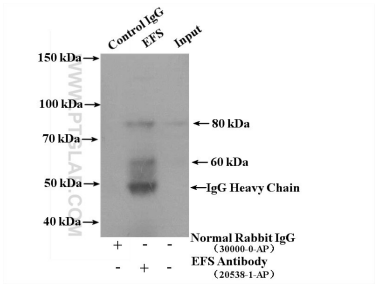
Immunofluorescent analysis of HepG2 cells, using EFS antibody 20538-1-AP at 1:25 dilution and Rhodamine-labeled goat anti-rabbit IgG (red).



Immunohistochemical analysis of paraffin-embedded human spleen tissue slide using 20538-1-AP (EFS antibody) at dilution of 1:200 (under 10x lens. Heat mediated antigen retrieval with Tris-EDTA buffer (pH 9.0).



Immunohistochemical analysis of paraffin-embedded human spleen tissue slide using 20538-1-AP (EFS antibody) at dilution of 1:200 (under 40x lens. Heat mediated antigen retrieval with Tris-EDTA buffer (pH 9.0).



IP result of anti-EFS (IP:20538-1-AP, 4ug; Detection:20538-1-AP 1:300) with mouse thymus tissue lysate 3200ug.