

For Research Use Only

SH3BP1 Polyclonal antibody

Catalog Number: 20541-1-AP

Featured Product

3 Publications



Basic Information

Catalog Number:

20541-1-AP

Size:

150ul, Concentration: 500 ug/ml by Nanodrop and 393 ug/ml by Bradford method using BSA as the standard;

Source:

Rabbit

Isotype:

IgG

Immunogen Catalog Number:

AG14575

GenBank Accession Number:

BC008282

GeneID (NCBI):

23616

UNIPROT ID:

Q9Y3L3

Full Name:

SH3-domain binding protein 1

Calculated MW:

701 aa, 76 kDa

Observed MW:

76-80 kDa, 51 kDa

Purification Method:

Antigen affinity purification

Recommended Dilutions:

WB 1:2000-1:10000

IHC 1:500-1:2000

IF/ICC 1:200-1:800

Applications

Tested Applications:

WB, IHC, IF/ICC, ELISA

Cited Applications:

WB, IF

Species Specificity:

human, mouse

Cited Species:

human, mouse

Note-IHC: suggested antigen retrieval with TE buffer pH 9.0; (*) Alternatively, antigen retrieval may be performed with citrate buffer pH 6.0

Positive Controls:

WB : HeLa cells, mouse brain tissue, HepG2 cells, mouse lung tissue, mouse spleen tissue

IHC : human stomach cancer tissue,

IF/ICC : HeLa cells,

Notable Publications

Author	Pubmed ID	Journal	Application
Daniel Schlam	26465210	Nat Commun	IF
Kibeom Park	35352878	Cancer Med	WB
Li Yang	38582737	J Formos Med Assoc	WB

Storage

Storage:

Store at -20°C. Stable for one year after shipment.

Storage Buffer:

PBS with 0.02% sodium azide and 50% glycerol pH 7.3.

Aliquoting is unnecessary for -20°C storage

*** 20ul sizes contain 0.1% BSA

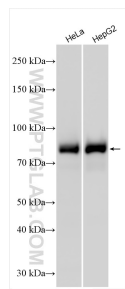
For technical support and original validation data for this product please contact:

T: 1 (888) 4PTGLAB (1-888-478-4522) (toll free in USA), or 1(312) 455-8498 (outside USA)

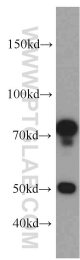
E: proteintech@ptglab.com
W: ptglab.com

This product is exclusively available under Proteintech Group brand and is not available to purchase from any other manufacturer.

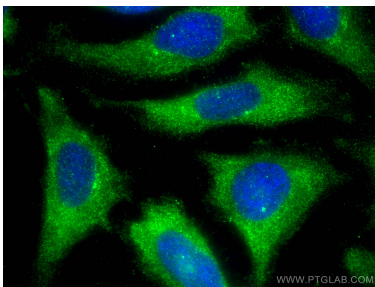
Selected Validation Data



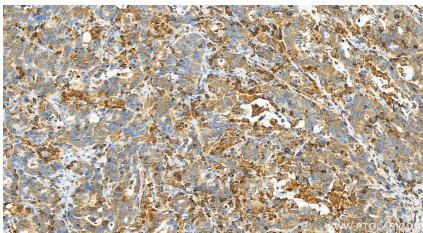
Various lysates were subjected to SDS PAGE followed by western blot with 20541-1-AP (SH3BP1 antibody) at dilution of 1:5000 incubated at room temperature for 1.5 hours.



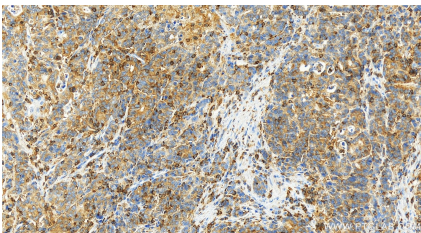
mouse lung tissue were subjected to SDS PAGE followed by western blot with 20541-1-AP (SH3BP1 antibody) at dilution of 1:500 incubated at room temperature for 1.5 hours.



Immunofluorescent analysis of (-20°C Ethanol) fixed HeLa cells using SH3BP1 antibody (20541-1-AP) at dilution of 1:400 and CoraLite®488-Conjugated Goat Anti-Rabbit IgG(H+L).



Immunohistochemical analysis of paraffin-embedded human stomach cancer tissue slide using 20541-1-AP (SH3BP1 antibody) at dilution of 1:1000 (under 20x lens). Heat mediated antigen retrieval with Tris-EDTA buffer (pH 9.0).



Immunohistochemical analysis of paraffin-embedded human stomach cancer tissue slide using 20541-1-AP (SH3BP1 antibody) at dilution of 1:1000 (under 20x lens). Heat mediated antigen retrieval with Tris-EDTA buffer (pH 9.0).