

For Research Use Only

# KANK2 Polyclonal antibody

Catalog Number: 20546-1-AP



## Basic Information

<b>Catalog Number:</b> 20546-1-AP	<b>GenBank Accession Number:</b> NM_001136191	<b>Purification Method:</b> Antigen affinity purification
<b>Size:</b> 150ul , Concentration: 900 µg/ml by Nanodrop and 487 µg/ml by Bradford method using BSA as the standard;	<b>GeneID (NCBI):</b> 25959	<b>Recommended Dilutions:</b> IHC 1:20-1:200 IF 1:10-1:100
<b>Source:</b> Rabbit	<b>Full Name:</b> KN motif and ankyrin repeat domains	
<b>Isotype:</b> IgG	<b>Calculated MW:</b> 91 kDa	

## Applications

<b>Tested Applications:</b> IF, IHC, ELISA	<b>Positive Controls:</b> IHC : human colon tissue, human kidney tissue IF : HeLa cells,
<b>Species Specificity:</b> human, mouse, rat	

**Note-IHC: suggested antigen retrieval with TE buffer pH 9.0; (\*) Alternatively, antigen retrieval may be performed with citrate buffer pH 6.0**

## Background Information

KANK2, also named as ANKRD25, KIAA1518, MXRA3 and SIP, is found as a candidate tumor suppressor for renal cell carcinoma. It is an ankyrin-repeat domain-containing protein. KANK2 has an identical role in the formation of actin stress fibers. The antibody is specific to KANK2.

## Storage

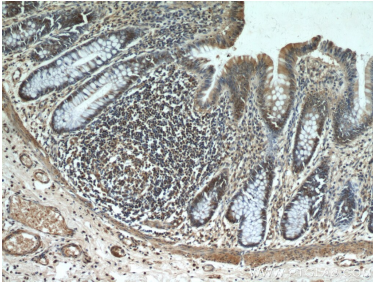
**Storage:**  
Store at -20°C. Stable for one year after shipment.  
**Storage Buffer:**  
PBS with 0.02% sodium azide and 50% glycerol pH 7.3.  
Aliquoting is unnecessary for -20°C storage

\*\*\* 20ul sizes contain 0.1% BSA

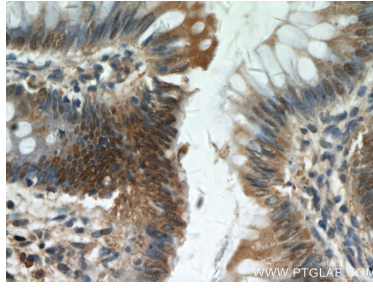
For technical support and original validation data for this product please contact:  
T: 1 (888) 4PTGLAB (1-888-478-4522) (toll free in USA), or 1(312) 455-8498 (outside USA)      E: proteintech@ptglab.com  
W: ptglab.com

This product is exclusively available under Proteintech Group brand and is not available to purchase from any other manufacturer.

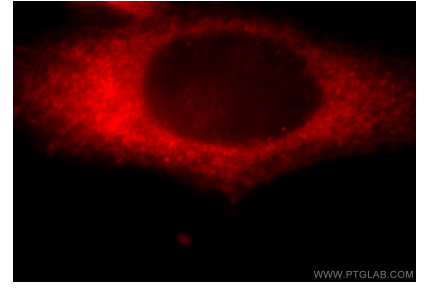
## Selected Validation Data



Immunohistochemical analysis of paraffin-embedded human colon using 20546-1-AP (KANK2 antibody) at dilution of 1:100 (under 10x lens).



Immunohistochemical analysis of paraffin-embedded human colon using 20546-1-AP (KANK2 antibody) at dilution of 1:100 (under 40x lens).



Immunofluorescent analysis of HeLa cells, using KANK2 antibody 20546-1-AP at 1:25 dilution and Rhodamine-labeled goat anti-rabbit IgG (red).