

For Research Use Only

SLC16A12 Polyclonal antibody

Catalog Number: 20553-1-AP **2 Publications**



Basic Information

Catalog Number: 20553-1-AP	GenBank Accession Number: NM_213606	Purification Method: Antigen affinity purification
Size: 150ul , Concentration: 600 µg/ml by Nanodrop and 333 µg/ml by Bradford method using BSA as the standard;	GeneID (NCBI): 387700	Recommended Dilutions: WB 1:500-1:1000 IHC 1:50-1:500
Source: Rabbit	UNIPROT ID: Q6ZSM3	
Isotype: IgG	Full Name: solute carrier family 16, member 12 (monocarboxylic acid transporter 12)	
	Calculated MW: 53 kDa	
	Observed MW: 53-56 kDa	

Applications

Tested Applications: IHC, WB, ELISA	Positive Controls: WB : mouse kidney tissue, IHC : human stomach cancer tissue, mouse testis tissue, human kidney tissue, human testis tissue, mouse kidney tissue
Cited Applications: IHC, WB	
Species Specificity: human, mouse	
Cited Species: human, Xenopus	

Note-IHC: suggested antigen retrieval with TE buffer pH 9.0; (*) Alternatively, antigen retrieval may be performed with citrate buffer pH 6.0

Background Information

SLC16A12, also named as MCT12 and CJMG, belongs to the major facilitator superfamily and Monocarboxylate porter (TC 2.A.1.13) family. It is a proton-linked monocarboxylate transporter. SLC16A12 catalyzes the rapid transport across the plasma membrane of many monocarboxylates. The antibody is specific to SLC16A12.

Notable Publications

Author	Pubmed ID	Journal	Application
Yuya Futagi	31784090	Biochem Biophys Res Commun	WB
Jie Mei	31348313	Medicine (Baltimore)	IHC

Storage

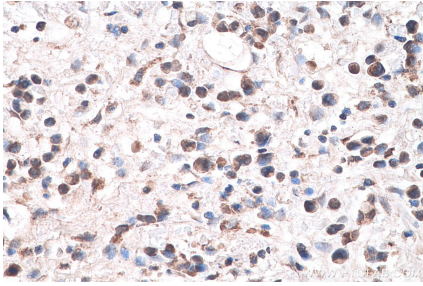
Storage:
Store at -20°C. Stable for one year after shipment.
Storage Buffer:
PBS with 0.02% sodium azide and 50% glycerol pH 7.3.
Aliquoting is unnecessary for -20°C storage

*** 20ul sizes contain 0.1% BSA

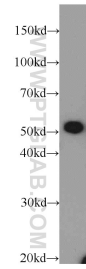
For technical support and original validation data for this product please contact:
T: 1 (888) 4PTGLAB (1-888-478-4522) (toll free in USA), or 1(312) 455-8498 (outside USA)
E: proteintech@ptglab.com
W: ptglab.com

This product is exclusively available under Proteintech Group brand and is not available to purchase from any other manufacturer.

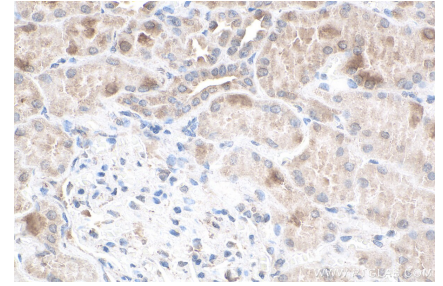
Selected Validation Data



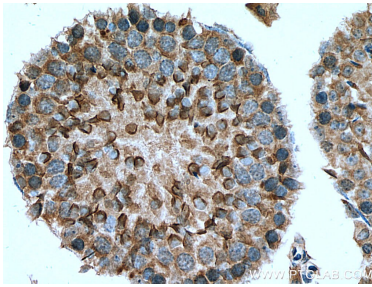
Immunohistochemical analysis of paraffin-embedded human stomach cancer tissue slide using 20553-1-AP (SLC16A12 antibody) at dilution of 1:200 (under 40x lens). Heat mediated antigen retrieval with Tris-EDTA buffer (pH 9.0).



mouse kidney tissue were subjected to SDS PAGE followed by western blot with 20553-1-AP (SLC16A12 antibody) at dilution of 1:100 incubated at room temperature for 1.5 hours.



Immunohistochemical analysis of paraffin-embedded human kidney tissue slide using 20553-1-AP (SLC16A12 antibody) at dilution of 1:200 (under 40x lens). Heat mediated antigen retrieval with Tris-EDTA buffer (pH 9.0).



Immunohistochemical analysis of paraffin-embedded mouse testis tissue slide using 20553-1-AP (SLC16A12 antibody) at dilution of 1:200 (under 40x lens). Heat mediated antigen retrieval with Tris-EDTA buffer (pH 9.0).