

For Research Use Only

# SLC16A12 Polyclonal antibody, PBS Only

Catalog Number: 20553-1-PBS



## Basic Information

### Catalog Number:

20553-1-PBS

### Size:

100ug , Concentration: 1 mg/ml by Nanodrop;

### Source:

Rabbit

### Isotype:

IgG

### GenBank Accession Number:

NM\_213606

### GeneID (NCBI):

387700

### UNIPROT ID:

Q6ZSM3

### Full Name:

solute carrier family 16, member 12 (monocarboxylic acid transporter 12)

### Calculated MW:

53 kDa

### Observed MW:

53-56 kDa

### Purification Method:

Antigen affinity purification

## Applications

### Tested Applications:

WB, IHC, Indirect ELISA

### Species Specificity:

human, mouse

## Background Information

SLC16A12, also named as MCT12 and CJMG, belongs to the major facilitator superfamily and Monocarboxylate porter (TC 2.A.1.13) family. It is a proton-linked monocarboxylate transporter. SLC16A12 catalyzes the rapid transport across the plasma membrane of many monocarboxylates. The antibody is specific to SLC16A12.

## Storage

### Storage:

Store at -80°C.

### Storage Buffer:

PBS only, pH7.3

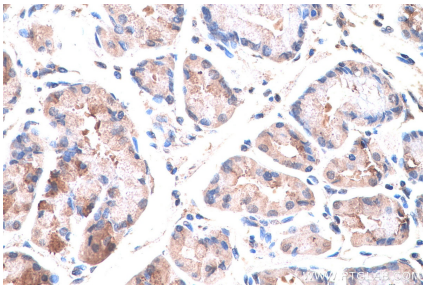
For technical support and original validation data for this product please contact:

T: 1 (888) 4PTGLAB (1-888-478-4522) (toll free in USA), or 1(312) 455-8498 (outside USA)

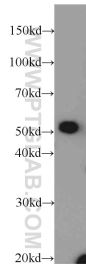
E: [proteintech@ptglab.com](mailto:proteintech@ptglab.com)  
W: [ptglab.com](http://ptglab.com)

This product is exclusively available under Proteintech Group brand and is not available to purchase from any other manufacturer.

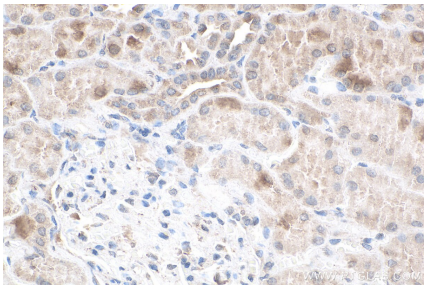
## Selected Validation Data



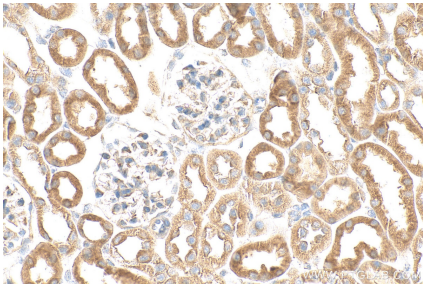
Immunohistochemical analysis of paraffin-embedded human stomach cancer tissue slide using 20553-1-AP (SLC16A12 antibody) at dilution of 1:200 (under 40x lens). Heat mediated antigen retrieval with Tris-EDTA buffer (pH 9.0). This data was developed using the same antibody clone with 20553-1-PBS in a different storage buffer formulation.



mouse kidney tissue were subjected to SDS PAGE followed by western blot with 20553-1-AP (SLC16A12 antibody) at dilution of 1:100 incubated at room temperature for 1.5 hours. This data was developed using the same antibody clone with 20553-1-PBS in a different storage buffer formulation.



Immunohistochemical analysis of paraffin-embedded human kidney tissue slide using 20553-1-AP (SLC16A12 antibody) at dilution of 1:200 (under 40x lens). Heat mediated antigen retrieval with Tris-EDTA buffer (pH 9.0). This data was developed using the same antibody clone with 20553-1-PBS in a different storage buffer formulation.



Immunohistochemical analysis of paraffin-embedded mouse kidney tissue slide using 20553-1-AP (SLC16A12 antibody) at dilution of 1:200 (under 40x lens). Heat mediated antigen retrieval with Tris-EDTA buffer (pH 9.0). This data was developed using the same antibody clone with 20553-1-PBS in a different storage buffer formulation.