

For Research Use Only

# CBLN2 Polyclonal antibody

Catalog Number: 20558-1-AP

2 Publications



## Basic Information

Catalog Number:

20558-1-AP

Size:

150ul, Concentration: 400 ug/ml by Nanodrop;

Source:

Rabbit

Isotype:

IgG

GenBank Accession Number:

NM\_182511

GeneID (NCBI):

147381

UNIPROT ID:

Q8IUK8

Full Name:

cerebellin 2 precursor

Calculated MW:

24 kDa

Observed MW:

24 kDa

Purification Method:

Antigen affinity purification

Recommended Dilutions:

WB 1:500-1:3000

## Applications

Tested Applications:

WB, ELISA

Cited Applications:

WB, IF

Species Specificity:

human, mouse, rat

Cited Species:

human, rat

Positive Controls:

WB : mouse brain tissue, rat brain tissue

## Notable Publications

Author	Pubmed ID	Journal	Application
Zeyu Wang	39577217	Int Immunopharmacol	WB
E-Li Wang	37355224	Life Sci	WB,IF

## Storage

Storage:

Store at -20°C. Stable for one year after shipment.

Storage Buffer:

PBS with 0.02% sodium azide and 50% glycerol pH 7.3.

Aliquoting is unnecessary for -20°C storage

\*\*\* 20ul sizes contain 0.1% BSA

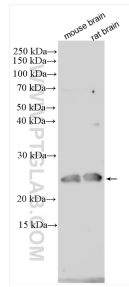
For technical support and original validation data for this product please contact:

T: 1 (888) 4PTGLAB (1-888-478-4522) (toll free in USA), or 1(312) 455-8498 (outside USA)

E: [proteintech@ptglab.com](mailto:proteintech@ptglab.com)  
W: [ptglab.com](http://ptglab.com)

This product is exclusively available under Proteintech Group brand and is not available to purchase from any other manufacturer.

## Selected Validation Data



Various lysates were subjected to SDS PAGE followed by western blot with 20558-1-AP (CBLN2 antibody) at dilution of 1:1500 incubated at room temperature for 1.5 hours.