

For Research Use Only

# CBLN4 Polyclonal antibody

Catalog Number: 20559-1-AP



## Basic Information

<b>Catalog Number:</b> 20559-1-AP	<b>GenBank Accession Number:</b> NM_080617	<b>Purification Method:</b> Antigen affinity purification
<b>Size:</b> 150ul , Concentration: 300 µg/ml by Nanodrop and 187 µg/ml by Bradford method using BSA as the standard;	<b>GeneID (NCBI):</b> 140689	<b>Recommended Dilutions:</b> WB 1:200-1:1000 IHC 1:20-1:200
<b>Source:</b> Rabbit	<b>Full Name:</b> cerebellin 4 precursor	
<b>Isotype:</b> IgG	<b>Calculated MW:</b> 22 kDa	
	<b>Observed MW:</b> 22 kDa	

## Applications

**Tested Applications:**  
IHC, WB, ELISA

**Species Specificity:**  
human, mouse, rat

**Note-IHC: suggested antigen retrieval with TE buffer pH 9.0; (\*) Alternatively, antigen retrieval may be performed with citrate buffer pH 6.0**

**Positive Controls:**

**WB :** mouse cerebellum tissue, mouse brain tissue, mouse kidney tissue

**IHC :** human cerebellum tissue, human testis tissue

## Background Information

CBLN4 may be involved in synaptic functions in the CNS. CBLN4 can enable ER export and secretion of CBLN3. The antibody has no cross reaction to CBLN1, 2, or 3.

## Storage

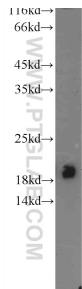
**Storage:**  
Store at -20°C. Stable for one year after shipment.  
**Storage Buffer:**  
PBS with 0.02% sodium azide and 50% glycerol pH 7.3.  
**Aliquoting is unnecessary for -20°C storage**

\*\*\* 20ul sizes contain 0.1% BSA

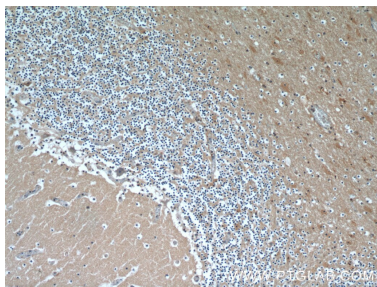
For technical support and original validation data for this product please contact:  
T: 1 (888) 4PTGLAB (1-888-478-4522) (toll free in USA), or 1(312) 455-8498 (outside USA)  
E: [proteintech@ptglab.com](mailto:proteintech@ptglab.com)  
W: [ptglab.com](http://ptglab.com)

This product is exclusively available under Proteintech Group brand and is not available to purchase from any other manufacturer.

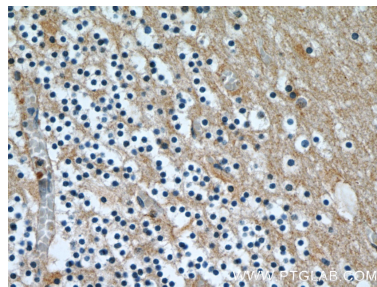
Selected Validation Data



mouse cerebellum tissue were subjected to SDS PAGE followed by western blot with 20559-1-AP (CBLN4 Antibody) at dilution of 1:300 incubated at room temperature for 1.5 hours.



Immunohistochemical analysis of paraffin-embedded human cerebellum using 20559-1-AP (CBLN4 antibody) at dilution of 1:50 (under 10x lens).



Immunohistochemical analysis of paraffin-embedded human cerebellum using 20559-1-AP (CBLN4 antibody) at dilution of 1:50 (under 40x lens).