

For Research Use Only

PAFAH1B3 Polyclonal antibody, PBS Only

Catalog Number: 20564-1-PBS

Featured Product



Basic Information

Catalog Number:

20564-1-PBS

Size:

100ug, Concentration: 1 mg/ml by Nanodrop;

Source:

Rabbit

Isotype:

IgG

GenBank Accession Number:

NM_002573

GeneID (NCBI):

5050

UNIPROT ID:

Q15102

Full Name:

platelet-activating factor acetylhydrolase, isoform Ib, gamma subunit 29kDa

Calculated MW:

26 kDa

Observed MW:

26-29 kDa

Purification Method:

Antigen affinity purification

Applications

Tested Applications:

WB, IHC, IF/ICC, Indirect ELISA

Species Specificity:

human, mouse, rat

Background Information

PAFAH1B3, also named as PAFAHG, belongs to the 'GDSL' lipolytic enzyme family and Platelet-activating factor acetylhydrolase IB beta/gamma subunits subfamily. It inactivates paf by removing the acetyl group at the sn-2 position. This is a catalytic subunit. PAFAH1B3 plays an important role during the development of brain. The antibody is specific to PAFAH1B3.

Storage

Storage:

Store at -80°C.

Storage Buffer:

PBS only, pH7.3

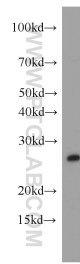
For technical support and original validation data for this product please contact:

T: 1 (888) 4PTGLAB (1-888-478-4522) (toll free in USA), or 1(312) 455-8498 (outside USA)

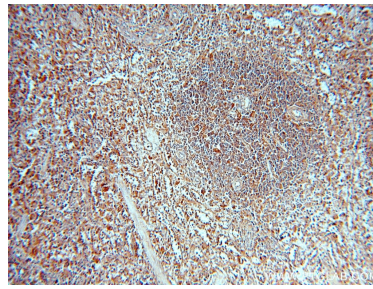
E: proteintech@ptglab.com
W: ptglab.com

This product is exclusively available under Proteintech Group brand and is not available to purchase from any other manufacturer.

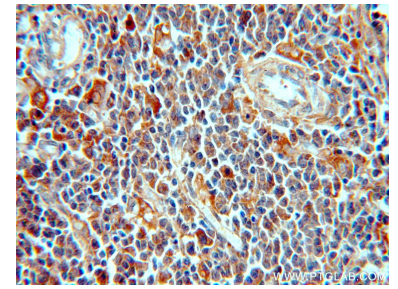
Selected Validation Data



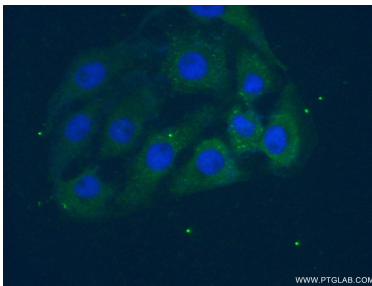
human brain tissue were subjected to SDS PAGE followed by western blot with 20564-1-AP (PAFAH1B3 antibody) at dilution of 1:500 incubated at room temperature for 1.5 hours. This data was developed using the same antibody clone with 20564-1-PBS in a different storage buffer formulation.



Immunohistochemical analysis of paraffin-embedded human spleen using 20564-1-AP (PAFAH1B3 antibody) at dilution of 1:50 (under 10x lens). This data was developed using the same antibody clone with 20564-1-PBS in a different storage buffer formulation.



Immunohistochemical analysis of paraffin-embedded human spleen using 20564-1-AP (PAFAH1B3 antibody) at dilution of 1:50 (under 40x lens). This data was developed using the same antibody clone with 20564-1-PBS in a different storage buffer formulation.



Immunofluorescent analysis of (-20°C Ethanol) fixed SH-SY5Y cells using 20564-1-AP (PAFAH1B3 antibody) at dilution of 1:50 and Alexa Fluor 488-conjugated AffiniPure Goat Anti-Rabbit IgG(H+L). This data was developed using the same antibody clone with 20564-1-PBS in a different storage buffer formulation.