

For Research Use Only

# DOC2B Polyclonal antibody

Catalog Number: 20574-1-AP

Featured Product

6 Publications



## Basic Information

<b>Catalog Number:</b> 20574-1-AP	<b>GenBank Accession Number:</b> NM_003585	<b>Purification Method:</b> Antigen affinity purification
<b>Size:</b> 150ul , Concentration: 260 µg/ml by Bradford method using BSA as the standard;	<b>GeneID (NCBI):</b> 8447	<b>Recommended Dilutions:</b> WB 1:1000-1:4000 IF 1:10-1:100
<b>Source:</b> Rabbit	<b>Full Name:</b> double C2-like domains, beta	
<b>Isotype:</b> IgG	<b>Calculated MW:</b> 46 kDa	
	<b>Observed MW:</b> 46 kDa	

## Applications

<b>Tested Applications:</b> IF, WB, ELISA	<b>Positive Controls:</b>
<b>Cited Applications:</b> ColP, IF, WB	<b>WB:</b> HEK-293 cells, mouse brain tissue, mouse kidney tissue
<b>Species Specificity:</b> human, mouse, rat	<b>IF:</b> HepG2 cells, Hela cells
<b>Cited Species:</b> human, rat, mouse	

## Background Information

DOC2B may be involved in constitutive membrane trafficking including dynein-dependent intracellular vesicle transport. In vitro, binds calcium and phospholipids. The antibody is specific to DOC2B.

## Notable Publications

Author	Pubmed ID	Journal	Application
Samatha Bhat	33758996	Cell Biol Toxicol	WB
Shama Prasada Kabekkodu	24570007	J Biol Chem	WB
Divya Adiga	35500882	Pharmacol Res	WB, ColP

## Storage

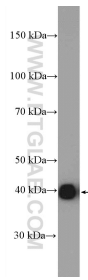
**Storage:**  
Store at -20°C. Stable for one year after shipment.  
**Storage Buffer:**  
PBS with 0.02% sodium azide and 50% glycerol pH 7.3.  
Aliquoting is unnecessary for -20°C storage

\*\*\* 20ul sizes contain 0.1% BSA

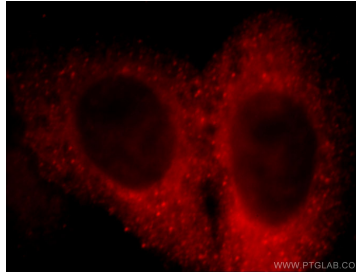
For technical support and original validation data for this product please contact:  
T: 1 (888) 4PTGLAB (1-888-478-4522) (toll free in USA), or 1(312) 455-8498 (outside USA)  
E: proteintech@ptglab.com  
W: ptglab.com

This product is exclusively available under Proteintech Group brand and is not available to purchase from any other manufacturer.

## Selected Validation Data



HEK-293 cells were subjected to SDS PAGE followed by western blot with 20574-1-AP (DOC2B antibody) at dilution of 1:2000 incubated at room temperature for 1.5 hours.



Immunofluorescent analysis of HepG2 cells, using DOC2B antibody 20574-1-AP at 1:25 dilution and Rhodamine-labeled goat anti-rabbit IgG (red).