

For Research Use Only

MSI1 Polyclonal antibody

Catalog Number: 20579-1-AP

1 Publications



Basic Information

Catalog Number:

20579-1-AP

Size:

150ul , Concentration: 273 µg/ml by Bradford method using BSA as the standard;

Source:

Rabbit

Isotype:

IgG

GenBank Accession Number:

NM_002442

GeneID (NCBI):

4440

UNIPROT ID:

O43347

Full Name:

musashi homolog 1 (Drosophila)

Calculated MW:

39 kDa

Purification Method:

Antigen affinity purification

Recommended Dilutions:

IHC 1:20-1:200

Applications

Tested Applications:

IF, IHC, ELISA

Cited Applications:

WB

Species Specificity:

human

Cited Species:

rat

Note-IHC: suggested antigen retrieval with TE buffer pH 9.0; (*) Alternatively, antigen retrieval may be performed with citrate buffer pH 6.0

Positive Controls:

IHC : human lung cancer tissue, human liver cancer tissue

Notable Publications

Author	Pubmed ID	Journal	Application
Lin-Yan Huang	35308117	Front Cell Neurosci	WB

Storage

Storage:

Store at -20°C. Stable for one year after shipment.

Storage Buffer:

PBS with 0.02% sodium azide and 50% glycerol pH 7.3.

Aliquoting is unnecessary for -20°C storage

*** 20ul sizes contain 0.1% BSA

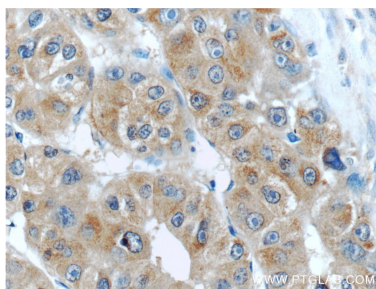
For technical support and original validation data for this product please contact:

T: 1 (888) 4PTGLAB (1-888-478-4522) (toll free in USA), or 1(312) 455-8498 (outside USA)

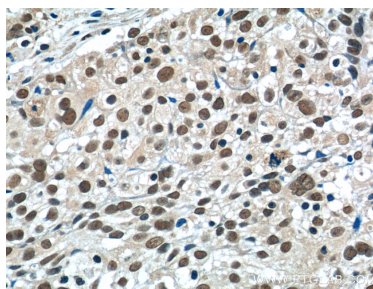
E: proteintech@ptglab.com
W: ptglab.com

This product is exclusively available under Proteintech Group brand and is not available to purchase from any other manufacturer.

Selected Validation Data



Immunohistochemical analysis of paraffin-embedded human liver cancer tissue slide using 20579-1-AP (MSI1 Antibody) at dilution of 1:50 (under 40x lens).



Immunohistochemical analysis of paraffin-embedded human lung cancer tissue slide using 20579-1-AP (MSI1 Antibody) at dilution of 1:50 (under 40x lens).