

# PI3 Kinase p110 Alpha Polyclonal antibody

Catalog Number: 20583-1-AP

8 Publications

## Basic Information

<b>Catalog Number:</b> 20583-1-AP	<b>GenBank Accession Number:</b> NM_006218	<b>Purification Method:</b> Antigen affinity purification
<b>Size:</b> 150ul , Concentration: 193 µg/ml by Bradford method using BSA as the standard;	<b>GeneID (NCBI):</b> 5290	<b>Recommended Dilutions:</b> WB 1:300-1:1000 IHC 1:50-1:500
<b>Source:</b> Rabbit	<b>Full Name:</b> phosphoinositide-3-kinase, catalytic, alpha polypeptide	
<b>Isotype:</b> IgG	<b>Calculated MW:</b> 124 kDa	
	<b>Observed MW:</b> 120-130 kDa	

## Applications

<b>Tested Applications:</b> IHC, WB, ELISA	<b>Positive Controls:</b>
<b>Cited Applications:</b> IHC, WB	<b>WB :</b> HepG2 cells, COLO 320 cells, HeLa cells, A431 cells, mouse liver tissue
<b>Species Specificity:</b> human, mouse, rat	<b>IHC :</b> human cervical cancer tissue,
<b>Cited Species:</b> human, rat, mouse	
<b>Note-IHC: suggested antigen retrieval with TE buffer pH 9.0; (*) Alternatively, antigen retrieval may be performed with citrate buffer pH 6.0</b>	

## Background Information

PIK3CA belongs to the PI3/PI4-kinase family. It phosphorylates PtdIns, PtdIns4P and PtdIns(4,5)P2 with a preference for PtdIns(4,5)P2. Defects in PIK3CA are associated with colorectal cancer (CRC). Defects in PIK3CA are associated with breast cancer. Defects in PIK3CA are associated with ovarian cancer. Defects in PIK3CA may underlie hepatocellular carcinoma (HCC). Defects in PIK3CA are a cause of keratosis seborrheic (KERSEB). The antibody is specific to PIK3CA.

## Notable Publications

Author	Pubmed ID	Journal	Application
Wu Jun J	23582786	Biomed Pharmacother	WB
H Zhang	28581513	Oncogene	WB,IHC
Hua Wang	27326255	J Cancer	IHC

## Storage

**Storage:**  
Store at -20°C. Stable for one year after shipment.

**Storage Buffer:**  
PBS with 0.02% sodium azide and 50% glycerol pH 7.3.

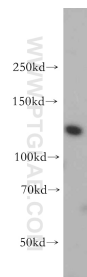
Aliquoting is unnecessary for -20°C storage

\*\*\* 20ul sizes contain 0.1% BSA

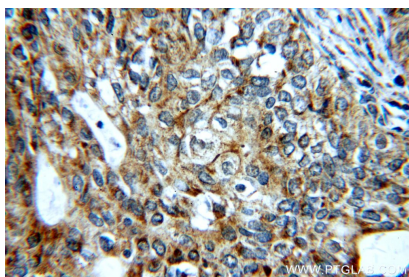
For technical support and original validation data for this product please contact:  
 T: 1 (888) 4PTGLAB (1-888-478-4522) (toll free in USA), or 1(312) 455-8498 (outside USA)  
 E: [proteintech@ptglab.com](mailto:proteintech@ptglab.com)  
 W: [ptglab.com](http://ptglab.com)

This product is exclusively available under Proteintech Group brand and is not available to purchase from any other manufacturer.

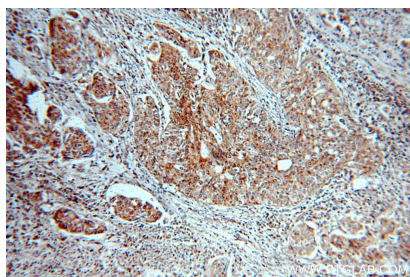
Selected Validation Data



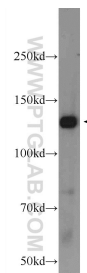
HepG2 cells were subjected to SDS PAGE followed by western blot with 20583-1-AP (PI3K p110(alpha) antibody) at dilution of 1:500 incubated at room temperature for 1.5 hours.



Immunohistochemical analysis of paraffin-embedded human cervical cancer using 20583-1-AP (PI3K p110(alpha) antibody) at dilution of 1:50 (under 40x lens).



Immunohistochemical analysis of paraffin-embedded human cervical cancer using 20583-1-AP (PI3K p110(alpha) antibody) at dilution of 1:50 (under 10x lens).



HeLa cells were subjected to SDS PAGE followed by western blot with 20583-1-AP (PI3K p110(alpha) antibody at dilution of 1:300 incubated at room temperature for 1.5 hours.