

For Research Use Only

# FAM3A Polyclonal antibody

Catalog Number: 20588-1-AP **2 Publications**



## Basic Information

<b>Catalog Number:</b> 20588-1-AP	<b>GenBank Accession Number:</b> BC002934	<b>Purification Method:</b> Antigen affinity purification
<b>Size:</b> 150ul , Concentration: 550 µg/ml by Nanodrop and 340 µg/ml by Bradford method using BSA as the standard;	<b>GeneID (NCBI):</b> 60343	<b>Recommended Dilutions:</b> WB 1:500-1:1000 IHC 1:50-1:500
<b>Source:</b> Rabbit	<b>Full Name:</b> family with sequence similarity 3, member A	
<b>Isotype:</b> IgG	<b>Calculated MW:</b> 230 aa, 25 kDa	
<b>Immunogen Catalog Number:</b> AG14343	<b>Observed MW:</b> 25-27 kDa	

## Applications

<b>Tested Applications:</b> IHC, WB, ELISA	<b>Positive Controls:</b> WB : mouse liver tissue, IHC : mouse pancreas tissue,
<b>Cited Applications:</b> WB	
<b>Species Specificity:</b> human, mouse, rat	
<b>Cited Species:</b> human, mouse	
<b>Note-IHC: suggested antigen retrieval with TE buffer pH 9.0; (*) Alternatively, antigen retrieval may be performed with citrate buffer pH 6.0</b>	

## Background Information

### Notable Publications

Author	Pubmed ID	Journal	Application
Fang-Fang Zhang	37056143	Neural Regen Res	WB
Lei Yang	37474885	In Vitro Cell Dev Biol Anim	WB

## Storage

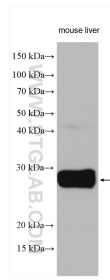
**Storage:**  
Store at -20°C. Stable for one year after shipment.  
**Storage Buffer:**  
PBS with 0.02% sodium azide and 50% glycerol pH 7.3.  
Aliquoting is unnecessary for -20°C storage

\*\*\* 20ul sizes contain 0.1% BSA

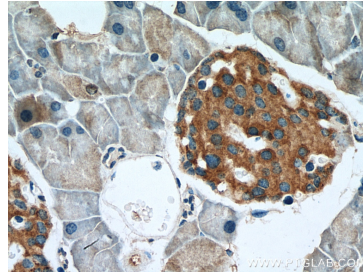
For technical support and original validation data for this product please contact:  
T: 1 (888) 4PTGLAB (1-888-478-4522) (toll free in USA), or 1(312) 455-8498 (outside USA)  
E: proteintech@ptglab.com  
W: ptglab.com

This product is exclusively available under Proteintech Group brand and is not available to purchase from any other manufacturer.

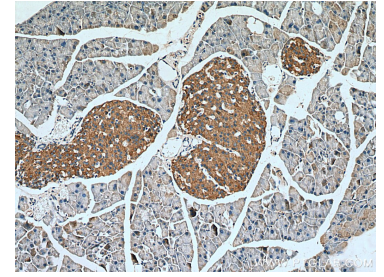
## Selected Validation Data



Mouse liver tissues were subjected to SDS PAGE followed by western blot with 20588-1-AP (FAM3A antibody) at dilution of 1:800 incubated at room temperature for 1.5 hours.



Immunohistochemical analysis of paraffin-embedded mouse pancreas tissue slide using 20588-1-AP (FAM3A antibody) at dilution of 1:200 (under 40x lens). Heat mediated antigen retrieval with Tris-EDTA buffer (pH 9.0).



Immunohistochemical analysis of paraffin-embedded mouse pancreas tissue slide using 20588-1-AP (FAM3A antibody) at dilution of 1:200 (under 10x lens). Heat mediated antigen retrieval with Tris-EDTA buffer (pH 9.0).