

For Research Use Only

ORAI2 Polyclonal antibody

Catalog Number: 20592-1-AP **8 Publications**



Basic Information

Catalog Number: 20592-1-AP	GenBank Accession Number: BC069270	Purification Method: Antigen Affinity purified
Size: 150ul, Concentration: 300 ug/ml by Nanodrop and 167 ug/ml by Bradford method using BSA as the standard;	GeneID (NCBI): 80228	Recommended Dilutions: WB 1:500-1:1000 IHC 1:20-1:200 IF/ICC 1:50-1:500
Source: Rabbit	UNIPROT ID: Q96SN7	
Isotype: IgG	Full Name: ORAI calcium release-activated calcium modulator 2	
Immunogen Catalog Number: AG14540	Calculated MW: 254 aa, 29 kDa	
	Observed MW: 36 kDa	

Applications

Tested Applications: WB, IHC, IF/ICC, ELISA	Positive Controls: WB : MCF-7 cells, mouse heart tissue IHC : human kidney tissue, IF/ICC : HEK-293 cells,
Cited Applications: WB, IF, IP	
Species Specificity: human, mouse	
Cited Species: human, mouse, rat	

Note-IHC: suggested antigen retrieval with TE buffer pH 9.0; (*) Alternatively, antigen retrieval may be performed with citrate buffer pH 6.0

Background Information

ORAI2, also named as C7orf19, CBCIP2, TMEM142B and PP1729, is a Ca²⁺ release-activated Ca²⁺-like (CRAC-like) channel subunit. The MW of ORAI2 is about 36 kDa for glycosylation (PMID: 19675303).

Notable Publications

Author	Pubmed ID	Journal	Application
Fangfang Xu	34595206	Front Mol Biosci	WB
Jesse Gammons	33849280	J Am Heart Assoc	WB
Wu Lele	33850559	Exp Ther Med	WB

Storage

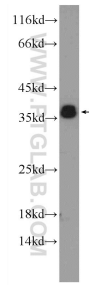
Storage:
Store at -20°C. Stable for one year after shipment.
Storage Buffer:
PBS with 0.02% sodium azide and 50% glycerol pH 7.3.
Aliquoting is unnecessary for -20°C storage

*** 20ul sizes contain 0.1% BSA

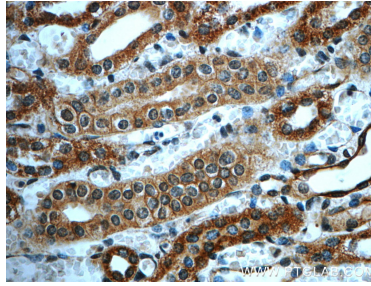
For technical support and original validation data for this product please contact:
T: 1 (888) 4PTGLAB (1-888-478-4522) (toll free in USA), or 1(312) 455-8498 (outside USA)
E: proteintech@ptglab.com
W: ptglab.com

This product is exclusively available under Proteintech Group brand and is not available to purchase from any other manufacturer.

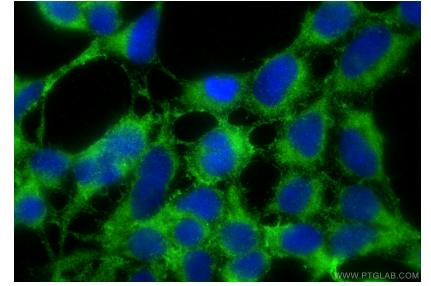
Selected Validation Data



MCF-7 cells were subjected to SDS PAGE followed by western blot with 20592-1-AP (ORAI2 Antibody) at dilution of 1:600 incubated at room temperature for 1.5 hours.



Immunohistochemical analysis of paraffin-embedded human kidney slide using 20592-1-AP (ORAI2 Antibody) at dilution of 1:50.



Immunofluorescent analysis of (-20°C Ethanol) fixed HEK-293 cells using ORAI2 antibody (20592-1-AP) at dilution of 1:200 and CoraLite@488-Conjugated Goat Anti-Rabbit IgG(H+L) (SA00013-2).