

For Research Use Only

# ORAI2 Polyclonal antibody, PBS Only

Catalog Number: 20592-1-PBS



## Basic Information

### Catalog Number:

20592-1-PBS

### Size:

100ug, Concentration: 1 mg/ml by Nanodrop;

### Source:

Rabbit

### Isotype:

IgG

### Immunogen Catalog Number:

AG14540

### GenBank Accession Number:

BC069270

### GeneID (NCBI):

80228

### UNIPROT ID:

Q96SN7

### Full Name:

ORAI calcium release-activated calcium modulator 2

### Calculated MW:

254 aa, 29 kDa

### Observed MW:

36 kDa

### Purification Method:

Antigen Affinity purified

## Applications

### Tested Applications:

WB, IHC, IF/ICC, Indirect ELISA

### Species Specificity:

human, mouse

## Background Information

ORAI2, also named as C7orf19, CBCIP2, TMEM142B and PP1729, is a Ca<sup>2+</sup> release-activated Ca<sup>2+</sup>-like (CRAC-like) channel subunit. The MW of ORAI2 is about 36 kDa for glycosylation (PMID: 19675303).

## Storage

### Storage:

Store at -80°C.

### Storage Buffer:

PBS Only

For technical support and original validation data for this product please contact:

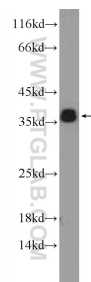
T: 1 (888) 4PTGLAB (1-888-478-4522) (toll free in USA), or 1(312) 455-8498 (outside USA)

E: [proteintech@ptglab.com](mailto:proteintech@ptglab.com)

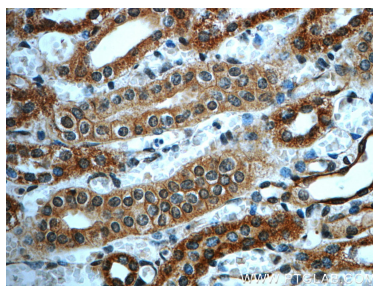
W: [ptglab.com](http://ptglab.com)

This product is exclusively available under Proteintech Group brand and is not available to purchase from any other manufacturer.

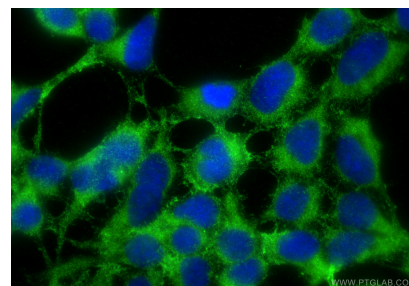
## Selected Validation Data



MCF-7 cells were subjected to SDS PAGE followed by western blot with 20592-1-AP (ORAI2 Antibody) at dilution of 1:600 incubated at room temperature for 1.5 hours. This data was developed using the same antibody clone with 20592-1-PBS in a different storage buffer formulation.



Immunohistochemical analysis of paraffin-embedded human kidney slide using 20592-1-AP (ORAI2 Antibody) at dilution of 1:50. This data was developed using the same antibody clone with 20592-1-PBS in a different storage buffer formulation.



Immunofluorescent analysis of (-20°C Ethanol) fixed HEK-293 cells using ORAI2 antibody (20592-1-AP) at dilution of 1:200 and CoraLite®488-Conjugated Goat Anti-Rabbit IgG(H+L) (SA00013-2). This data was developed using the same antibody clone with 20592-1-PBS in a different storage buffer formulation.