

For Research Use Only

C16orf70 Polyclonal antibody

Catalog Number: 20602-1-AP



Basic Information

Catalog Number: 20602-1-AP	GenBank Accession Number: BC004556	Purification Method: Antigen affinity purification
Size: 150ul , Concentration: 400 ug/ml by Nanodrop and 340 ug/ml by Bradford method using BSA as the standard;	GeneID (NCBI): 80262	Recommended Dilutions: WB 1:500-1:2000 IHC 1:20-1:200
Source: Rabbit	UNIPROT ID: Q9BSU1	
Isotype: IgG	Full Name: chromosome 16 open reading frame 70	
Immunogen Catalog Number: AG14576	Calculated MW: 422 aa, 48 kDa	
	Observed MW: 48 kDa	

Applications

Tested Applications: WB, IHC, ELISA	Positive Controls:
Species Specificity: human, mouse, rat	WB : mouse brain tissue, rat brain tissue
Note-IHC: suggested antigen retrieval with TE buffer pH 9.0; (*) Alternatively, antigen retrieval may be performed with citrate buffer pH 6.0	IHC : human liver cancer tissue,

Background Information

The function of C20orf30 has not been widely studied, and is yet to be fully elucidated. The MW of this protein is 48 kDa, and our antibody specially recognises the 48 kDa protein.

Storage

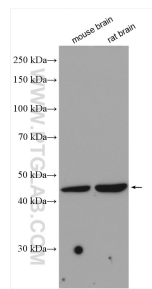
Storage:
Store at -20°C. Stable for one year after shipment.
Storage Buffer:
PBS with 0.02% sodium azide and 50% glycerol pH 7.3.
Aliquoting is unnecessary for -20°C storage

*** 20ul sizes contain 0.1% BSA

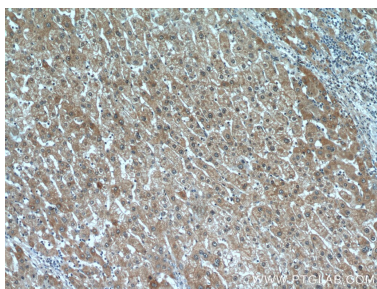
For technical support and original validation data for this product please contact:
T: 1 (888) 4PTGLAB (1-888-478-4522) (toll free in USA), or 1(312) 455-8498 (outside USA)
E: proteintech@ptglab.com
W: ptglab.com

This product is exclusively available under Proteintech Group brand and is not available to purchase from any other manufacturer.

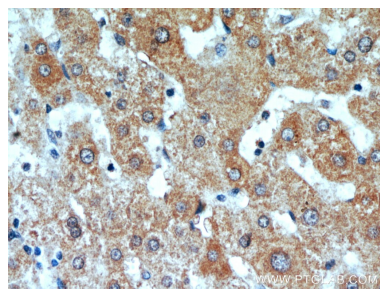
Selected Validation Data



Various lysates were subjected to SDS PAGE followed by western blot with 20602-1-AP (C16orf70 antibody) at dilution of 1:1000 incubated at room temperature for 1.5 hours.



Immunohistochemical analysis of paraffin-embedded human liver cancer using 20602-1-AP (C16orf70 antibody) at dilution of 1:100 (under 10x lens).



Immunohistochemical analysis of paraffin-embedded human liver cancer using 20602-1-AP (C16orf70 antibody) at dilution of 1:100 (under 40x lens).