

For Research Use Only

HECTD1 Polyclonal antibody

Catalog Number: 20605-1-AP

Featured Product

8 Publications



Basic Information

Catalog Number: 20605-1-AP	GenBank Accession Number: BC006237	Purification Method: Antigen affinity purification
Size: 150ul, Concentration: 500 µg/ml by Nanodrop and 400 µg/ml by Bradford method using BSA as the standard;	GeneID (NCBI): 25831	Recommended Dilutions: WB 1:500-1:3000 IHC 1:50-1:500 IF 1:10-1:100
Source: Rabbit	Full Name: HECT domain containing 1	
Isotype: IgG	Calculated MW: 2612 aa, 290 kDa	
Immunogen Catalog Number: AG14581	Observed MW: 290 kDa	

Applications

Tested Applications:

IF, IHC, WB, ELISA

Cited Applications:

IF, WB

Species Specificity:

human, mouse

Cited Species:

human, mouse

Note-IHC: suggested antigen retrieval with TE buffer pH 9.0; (*) Alternatively, antigen retrieval may be performed with citrate buffer pH 6.0

Positive Controls:

WB: HEK-293 cells, human brain tissue, HeLa cells, mouse brain tissue

IHC: human kidney tissue, human brain tissue

IF: HeLa cells,

Background Information

HECTD1 (E3 ubiquitin-protein ligase), which accepts ubiquitin from an E2 ubiquitin-conjugating enzyme in the form of a thioester and then directly transfers the ubiquitin to targeted substrates, may be required for development of the head mesenchyme and neural tube closure. It is also involved in sporadic Parkinson's disease (PMID:16714300). This protein is specific to HECTD1.

Notable Publications

Author	Pubmed ID	Journal	Application
Hui Yang	33243972	Cell Death Dis	WB
Ying Bai	29114076	J Neurosci	WB
Liu Rui	29797543	Cell Microbiol	WB

Storage

Storage:

Store at -20°C. Stable for one year after shipment.

Storage Buffer:

PBS with 0.02% sodium azide and 50% glycerol pH 7.3.

Aliquoting is unnecessary for -20°C storage

*** 20ul sizes contain 0.1% BSA

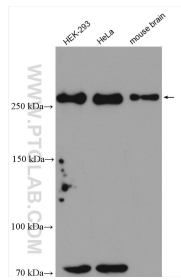
For technical support and original validation data for this product please contact:

T: 1 (888) 4PTGLAB (1-888-478-4522) (toll free in USA), or 1(312) 455-8498 (outside USA)

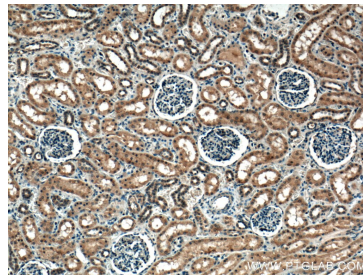
E: proteintech@ptglab.com
W: ptglab.com

This product is exclusively available under Proteintech Group brand and is not available to purchase from any other manufacturer.

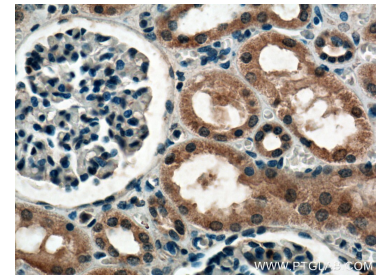
Selected Validation Data



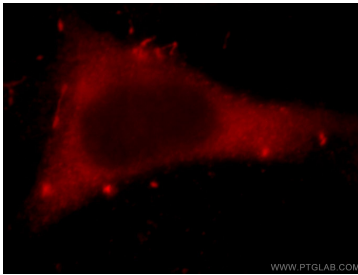
Various lysates were subjected to SDS PAGE followed by western blot with 20605-1-AP (HECTD1 antibody) at dilution of 1:1500 incubated at room temperature for 1.5 hours.



Immunohistochemical analysis of paraffin-embedded human kidney tissue slide using 20605-1-AP (HECTD1 antibody) at dilution of 1:200 (under 10x lens. Heat mediated antigen retrieval with Tris-EDTA buffer (pH 9.0).



Immunohistochemical analysis of paraffin-embedded human kidney tissue slide using 20605-1-AP (HECTD1 antibody) at dilution of 1:200 (under 40x lens. Heat mediated antigen retrieval with Tris-EDTA buffer (pH 9.0).



Immunofluorescent analysis of HeLa cells, using HECTD1 antibody 20605-1-AP at 1:25 dilution and Rhodamine-labeled goat anti-rabbit IgG (red).