

For Research Use Only

SLC37A4 Polyclonal antibody

Catalog Number: 20612-1-AP

2 Publications



Basic Information

Catalog Number:

20612-1-AP

Size:

150ul, Concentration: 200 ug/ml by Nanodrop and 180 ug/ml by Bradford method using BSA as the standard;

Source:

Rabbit

Isotype:

IgG

Immunogen Catalog Number:

AG14660

GenBank Accession Number:

BC015650

GeneID (NCBI):

2542

UNIPROT ID:

O43826

Full Name:

solute carrier family 37 (glucose-6-phosphate transporter), member 4

Calculated MW:

429 aa, 46 kDa

Observed MW:

46 kDa

Purification Method:

Antigen affinity purification

Recommended Dilutions:

WB 1:500-1:2000

IHC 1:20-1:200

Applications

Tested Applications:

WB, IHC, ELISA

Cited Applications:

WB, IF

Species Specificity:

human, mouse, rat

Cited Species:

human

Note-IHC: suggested antigen retrieval with TE buffer pH 9.0; (*) Alternatively, antigen retrieval may be performed with citrate buffer pH 6.0

Positive Controls:

WB : HepG2 cells, HeLa cells, mouse kidney tissue, mouse liver tissue, rat liver tissue

IHC : human kidney tissue, human liver tissue

Notable Publications

Author	Pubmed ID	Journal	Application
Keita Tanigaki	39433915	Sci Rep	IF
Jianye Zhong	37532687	Cell Death Discov	WB

Storage

Storage:

Store at -20°C. Stable for one year after shipment.

Storage Buffer:

PBS with 0.02% sodium azide and 50% glycerol pH 7.3.

Aliquoting is unnecessary for -20°C storage

*** 20ul sizes contain 0.1% BSA

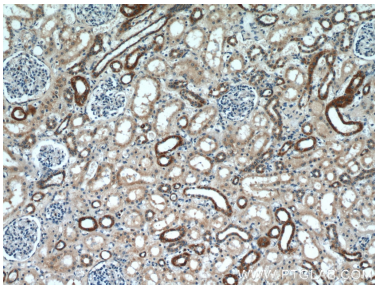
For technical support and original validation data for this product please contact:

T: 1 (888) 4PTGLAB (1-888-478-4522) (toll free in USA), or 1(312) 455-8498 (outside USA)

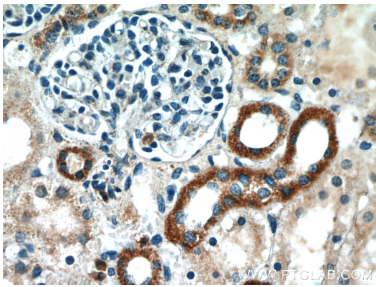
E: proteintech@ptglab.com
W: ptglab.com

This product is exclusively available under Proteintech Group brand and is not available to purchase from any other manufacturer.

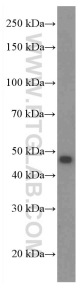
Selected Validation Data



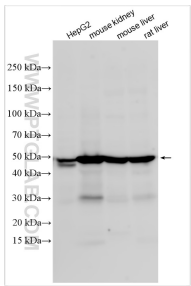
Immunohistochemical analysis of paraffin-embedded human kidney using 20612-1-AP (SLC37A4 antibody) at dilution of 1:50 (under 10x lens).



Immunohistochemical analysis of paraffin-embedded human kidney using 20612-1-AP (SLC37A4 antibody) at dilution of 1:50 (under 40x lens).



mouse liver tissue were subjected to SDS PAGE followed by western blot with 20612-1-AP (SLC37A4 Antibody) at dilution of 1:1000 incubated at room temperature for 1.5 hours.



Various lysates were subjected to SDS PAGE followed by western blot with 20612-1-AP (SLC37A4 antibody) at dilution of 1:1000 incubated at room temperature for 1.5 hours.