

For Research Use Only

# SLC25A40 Polyclonal antibody

Catalog Number: 20615-1-AP



## Basic Information

|   |  |  |
|---|--|--|
| <b>Catalog Number:</b><br>20615-1-AP                          | <b>GenBank Accession Number:</b><br>BC027322             | <b>Purification Method:</b><br>Antigen affinity purification         |
| <b>Size:</b><br>150ul , Concentration: 400 ug/ml by Nanodrop; | <b>GeneID (NCBI):</b><br>55972                           | <b>Recommended Dilutions:</b><br>WB 1:2000-1:12000<br>IHC 1:50-1:500 |
| <b>Source:</b><br>Rabbit                                      | <b>UNIPROT ID:</b><br>Q8TBP6                             |  |
| <b>Isotype:</b><br>IgG  | <b>Full Name:</b><br>solute carrier family 25, member 40 |  |
| <b>Immunogen Catalog Number:</b><br>AG14669                   | <b>Calculated MW:</b><br>338 aa, 38 kDa                  |  |
|   | <b>Observed MW:</b><br>30-38 kDa                         |  |

## Applications

|   |  |
|---|--|
| <b>Tested Applications:</b><br>WB, IHC, ELISA   | <b>Positive Controls:</b>  |
| <b>Species Specificity:</b><br>human, mouse   | <b>WB :</b> C2C12 cells, mouse kidney tissue, mouse liver tissue |
| <b>Note-IHC:</b> suggested antigen retrieval with <b>TE buffer pH 9.0; (*) Alternatively, antigen retrieval may be performed with citrate buffer pH 6.0</b> | <b>IHC :</b> human placenta tissue, mouse kidney tissue          |

## Background Information

SLC25A40 (solute carrier family 25, member 40) is one of the solute carrier (SLC) transporters that comprise a family of MCS transporters and uptakes GSH into mitochondria (PMID: 37407483). The SLC25A40 mRNA levels were significantly increased in both the kidneys of LPS mice and KMRC-1 cells after LPS treatment, when compared with those in the controls (PMID: 35955707).

## Storage

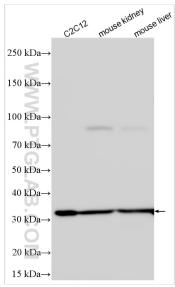
**Storage:**  
Store at -20°C. Stable for one year after shipment.  
**Storage Buffer:**  
PBS with 0.02% sodium azide and 50% glycerol pH 7.3.  
Aliquoting is unnecessary for -20°C storage

\*\*\* 20ul sizes contain 0.1% BSA

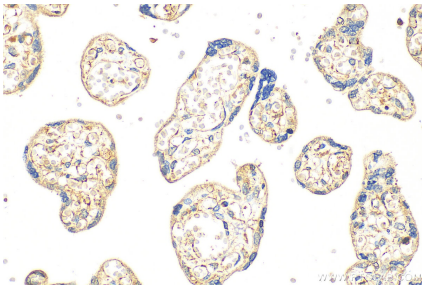
For technical support and original validation data for this product please contact:  
T: 1 (888) 4PTGLAB (1-888-478-4522) (toll free in USA), or 1(312) 455-8498 (outside USA)  
E: proteintech@ptglab.com  
W: ptglab.com

This product is exclusively available under Proteintech Group brand and is not available to purchase from any other manufacturer.

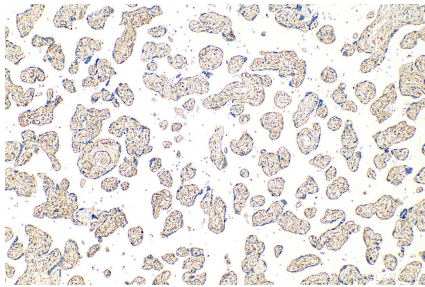
Selected Validation Data



Various lysates were subjected to SDS PAGE followed by western blot with 20615-1-AP (SLC25A40 antibody) at dilution of 1:6000 incubated at room temperature for 1.5 hours.



Immunohistochemical analysis of paraffin-embedded human placenta tissue slide using 20615-1-AP (SLC25A40 antibody) at dilution of 1:200 (under 40x lens). Heat mediated antigen retrieval with Tris-EDTA buffer (pH 9.0).



Immunohistochemical analysis of paraffin-embedded human placenta tissue slide using 20615-1-AP (SLC25A40 antibody) at dilution of 1:200 (under 10x lens). Heat mediated antigen retrieval with Tris-EDTA buffer (pH 9.0).