

For Research Use Only

SLC25A40 Polyclonal antibody, PBS Only

Catalog Number: 20615-1-PBS



Basic Information

Catalog Number:

20615-1-PBS

Size:

100ug, Concentration: 1 mg/ml by Nanodrop;

Source:

Rabbit

Isotype:

IgG

Immunogen Catalog Number:

AG14669

GenBank Accession Number:

BC027322

GeneID (NCBI):

55972

UNIPROT ID:

Q8TBP6

Full Name:

solute carrier family 25, member 40

Calculated MW:

338 aa, 38 kDa

Observed MW:

30-38 kDa

Purification Method:

Antigen affinity purification

Applications

Tested Applications:

WB, IHC, Indirect ELISA

Species Specificity:

human, mouse

Background Information

SLC25A40 (solute carrier family 25, member 40) is one of the solute carrier (SLC) transporters that comprise a family of MCS transporters and uptakes GSH into mitochondria (PMID: 37407483). The SLC25A40 mRNA levels were significantly increased in both the kidneys of LPS mice and KMRC-1 cells after LPS treatment, when compared with those in the controls (PMID: 35955707).

Storage

Storage:

Store at -80°C.

Storage Buffer:

PBS Only

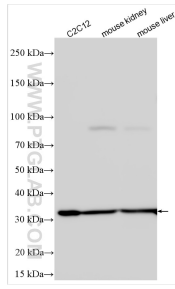
For technical support and original validation data for this product please contact:

T: 1 (888) 4PTGLAB (1-888-478-4522) (toll free in USA), or 1(312) 455-8498 (outside USA)

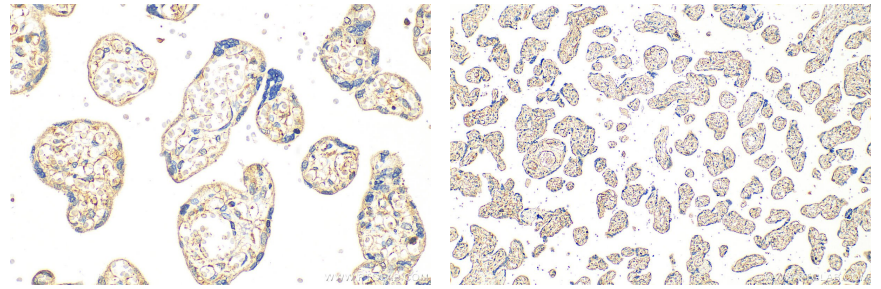
E: proteintech@ptglab.com
W: ptglab.com

This product is exclusively available under Proteintech Group brand and is not available to purchase from any other manufacturer.

Selected Validation Data



Various lysates were subjected to SDS PAGE followed by western blot with 20615-1-AP (SLC25A40 antibody) at dilution of 1:6000 incubated at room temperature for 1.5 hours. This data was developed using the same antibody clone with 20615-1-PBS in a different storage buffer formulation.



Immunohistochemical analysis of paraffin-embedded human placenta tissue slide using 20615-1-AP (SLC25A40 antibody) at dilution of 1:200 (under 40x lens). Heat mediated antigen retrieval with Tris-EDTA buffer (pH 9.0). This data was developed using the same antibody clone with 20615-1-PBS in a different storage buffer formulation.

Immunohistochemical analysis of paraffin-embedded human placenta tissue slide using 20615-1-AP (SLC25A40 antibody) at dilution of 1:200 (under 10x lens). Heat mediated antigen retrieval with Tris-EDTA buffer (pH 9.0). This data was developed using the same antibody clone with 20615-1-PBS in a different storage buffer formulation.