

For Research Use Only

C2orf7 Polyclonal antibody

Catalog Number: 20616-1-AP



Basic Information

Catalog Number: 20616-1-AP	GenBank Accession Number: BC005069	Purification Method: Antigen affinity purification
Size: 150ul , Concentration: 600 ug/ml by Nanodrop and 447 ug/ml by Bradford method using BSA as the standard;	GeneID (NCBI): 84279	Recommended Dilutions: WB 1:500-1:2000
Source: Rabbit	UNIPROT ID: Q9BSG0	
Isotype: IgG	Full Name: chromosome 2 open reading frame 7	
Immunogen Catalog Number: AG14678	Calculated MW: 188 aa, 21 kDa	
	Observed MW: 21-30 kDa	

Applications

Tested Applications: WB, ELISA	Positive Controls: WB : human plasma, human serum
Species Specificity: human	

Background Information

Protease-associated domain-containing 1 (PRADC1), also known as C2orf7, is an enigmatic secretory protein widely expressed in humans and mice. C2orf7 is a 30-kDa N-glycosylated secretory protein with a protease-associated domain (PMID: 31689374).

Storage

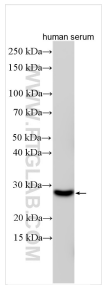
Storage:
Store at -20°C. Stable for one year after shipment.
Storage Buffer:
PBS with 0.02% sodium azide and 50% glycerol pH 7.3.
Aliquoting is unnecessary for -20°C storage

*** 20ul sizes contain 0.1% BSA

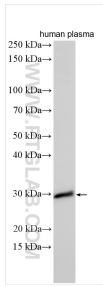
For technical support and original validation data for this product please contact:
T: 1 (888) 4PTGLAB (1-888-478-4522) (toll free in USA), or 1(312) 455-8498 (outside USA)
E: proteintech@ptglab.com
W: ptglab.com

This product is exclusively available under Proteintech Group brand and is not available to purchase from any other manufacturer.

Selected Validation Data



Various lysates were subjected to SDS PAGE followed by western blot with 20616-1-AP (C2orf7 antibody) at dilution of 1:600 incubated at room temperature for 1.5 hours.



Various lysates were subjected to SDS PAGE followed by western blot with 20616-1-AP (C2orf7 antibody) at dilution of 1:1000 incubated at room temperature for 1.5 hours.