

For Research Use Only

CYHR1 Polyclonal antibody, PBS Only

Catalog Number:20617-1-PBS



Basic Information

Catalog Number: 20617-1-PBS	GenBank Accession Number: BC005073	Purification Method: Antigen affinity purification
Size: 100ug , Concentration: 1 mg/ml by Nanodrop;	GeneID (NCBI): 50626	
Source: Rabbit	UNIPROT ID: P0DTL6	
Isotype: IgG	Full Name: cysteine/histidine-rich 1	
Immunogen Catalog Number: AG14679	Calculated MW: 362 aa, 41 kDa	
	Observed MW: 31,40-43 kDa	

Applications

Tested Applications:
WB, Indirect ELISA

Species Specificity:
human

Background Information

CYHR1, or Cysteine/Histidine-rich protein 1, is a protein that was first discovered in a yeast two-hybrid screen with murine galectin-3 (PMID: 26676980). It is encoded by the CYHR1 gene in humans. The protein is known for its N-terminal cysteine- and histidine-rich domain, which shares similarity with metal-binding zinc finger domains found in other proteins. CYHR1 is involved in various cellular functions, including protein binding and metal ion binding, as indicated by its gene ontology (GO) terms.

Storage

Storage:
Store at -80°C.
Storage Buffer:
PBS Only

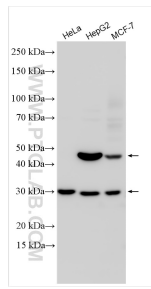
For technical support and original validation data for this product please contact:

T: 1 (888) 4PTGLAB (1-888-478-4522) (toll free in USA), or 1(312) 455-8498 (outside USA)

E: proteintech@ptglab.com
W: ptglab.com

This product is exclusively available under Proteintech Group brand and is not available to purchase from any other manufacturer.

Selected Validation Data



Various lysates were subjected to SDS PAGE followed by western blot with 20617-1-AP (CYHR1 antibody) at dilution of 1:500 incubated at room temperature for 1.5 hours. This data was developed using the same antibody clone with 20617-1-PBS in a different storage buffer formulation.