

For Research Use Only

ABHD12B Polyclonal antibody

Catalog Number: 20623-1-AP



Basic Information

Catalog Number:

20623-1-AP

Size:

150ul , Concentration: 1000 ug/ml by Nanodrop and 600 ug/ml by Bradford method using BSA as the standard;

Source:

Rabbit

Isotype:

IgG

Immunogen Catalog Number:

AG14426

GenBank Accession Number:

BC034603

GeneID (NCBI):

145447

UNIPROT ID:

Q7Z5M8

Full Name:

abhydrolase domain containing 12B

Calculated MW:

362 aa, 41 kDa

Observed MW:

41 kDa, 29 kDa

Purification Method:

Antigen affinity purification

Recommended Dilutions:

WB 1:500-1:1000

IHC 1:20-1:200

Applications

Tested Applications:

WB, IHC, ELISA

Species Specificity:

human, mouse

Note-IHC: suggested antigen retrieval with *TE buffer pH 9.0; (*) Alternatively, antigen retrieval may be performed with citrate buffer pH 6.0*

Positive Controls:

WB : mouse skin tissue, mouse kidney tissue

IHC : human skin tissue, human kidney tissue

Storage

Storage:

Store at -20°C. Stable for one year after shipment.

Storage Buffer:

PBS with 0.02% sodium azide and 50% glycerol pH 7.3.

Aliquoting is unnecessary for -20°C storage

*** 20ul sizes contain 0.1% BSA

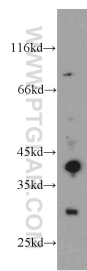
For technical support and original validation data for this product please contact:

T: 1 (888) 4PTGLAB (1-888-478-4522) (toll free in USA), or 1(312) 455-8498 (outside USA)

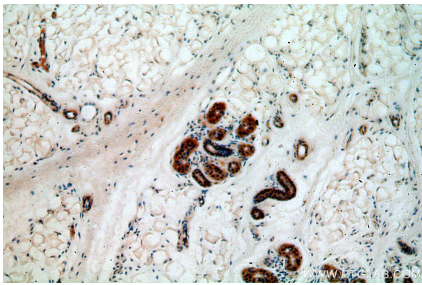
E: proteintech@ptglab.com
W: ptglab.com

This product is exclusively available under Proteintech Group brand and is not available to purchase from any other manufacturer.

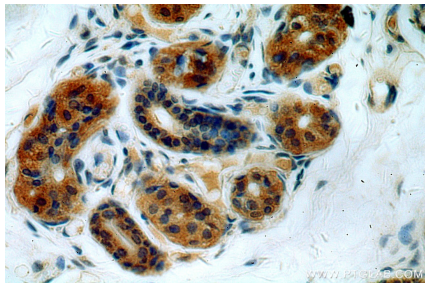
Selected Validation Data



mouse skin tissue were subjected to SDS PAGE followed by western blot with 20623-1-AP (ABHD12B antibody) at dilution of 1:200 incubated at room temperature for 1.5 hours.



Immunohistochemical analysis of paraffin-embedded human skin using 20623-1-AP (ABHD12B antibody) at dilution of 1:50 (under 10x lens).



Immunohistochemical analysis of paraffin-embedded human skin using 20623-1-AP (ABHD12B antibody) at dilution of 1:50 (under 40x lens).