

For Research Use Only

CPPED1 Polyclonal antibody

Catalog Number: 20628-1-AP



Basic Information

Catalog Number: 20628-1-AP	GenBank Accession Number: BC006289	Purification Method: Antigen affinity purification
Size: 150ul , Concentration: 187 µg/ml by Bradford method using BSA as the standard;	GeneID (NCBI): 55313	Recommended Dilutions: WB 1:200-1:1000 IHC 1:20-1:200
Source: Rabbit	Full Name: calcineurin-like phosphoesterase domain containing 1	
Isotype: IgG	Calculated MW: 314 aa, 36 kDa	
Immunogen Catalog Number: AG14572	Observed MW: 28-35 kDa	

Applications

Tested Applications: IHC, WB, ELISA	Positive Controls: WB : SMMC-7721 cells, IHC : human liver cancer tissue,
Species Specificity: human	

Note-IHC: suggested antigen retrieval with TE buffer pH 9.0; (*) Alternatively, antigen retrieval may be performed with citrate buffer pH 6.0

Background Information

CPPED1, also named as CSTP1, plays an inhibitory role in glucose uptake by adipocytes. It has some isoforms with MW 20 kDa and 28-35 kDa.

Storage

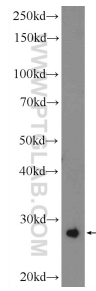
Storage:
Store at -20°C. Stable for one year after shipment.
Storage Buffer:
PBS with 0.02% sodium azide and 50% glycerol pH 7.3.
Aliquoting is unnecessary for -20°C storage

*** 20ul sizes contain 0.1% BSA

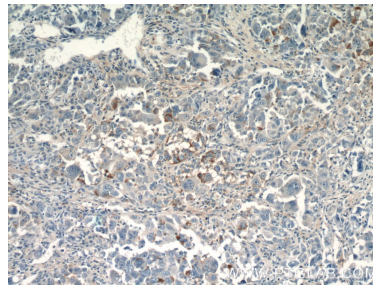
For technical support and original validation data for this product please contact:
T: 1 (888) 4PTGLAB (1-888-478-4522) (toll free in USA), or 1(312) 455-8498 (outside USA)
E: proteintech@ptglab.com
W: ptglab.com

This product is exclusively available under Proteintech Group brand and is not available to purchase from any other manufacturer.

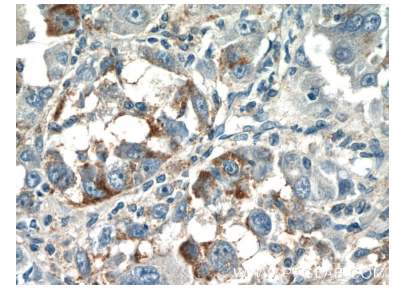
Selected Validation Data



SMMC-7721 cells were subjected to SDS PAGE followed by western blot with 20628-1-AP (CPPED1 Antibody) at dilution of 1:300 incubated at room temperature for 1.5 hours.



Immunohistochemical analysis of paraffin-embedded human liver cancer tissue slide using 20628-1-AP (CPPED1 Antibody) at dilution of 1:50 (under 10x lens).



Immunohistochemical analysis of paraffin-embedded human liver cancer tissue slide using 20628-1-AP (CPPED1 Antibody) at dilution of 1:50 (under 40x lens).