

For Research Use Only

CXCR2 Polyclonal antibody

Catalog Number: 20634-1-AP

Featured Product

35 Publications



Basic Information

Catalog Number:

20634-1-AP

Size:

150ul, Concentration: 500 ug/ml by Nanodrop;

Source:

Rabbit

Isotype:

IgG

Immunogen Catalog Number:

AG14670

GenBank Accession Number:

BC037961

GeneID (NCBI):

3579

UNIPROT ID:

P25025

Full Name:

interleukin 8 receptor, beta

Calculated MW:

360 aa, 41 kDa

Observed MW:

45-50 kDa

Purification Method:

Antigen affinity purification

Recommended Dilutions:

WB 1:1000-1:4000

IP 0.5-4.0 ug for 1.0-3.0 mg of total protein lysate

IHC 1:50-1:500

IF-P 1:50-1:500

Applications

Tested Applications:

WB, IHC, IF-P, IP, ELISA

Cited Applications:

WB, IHC, IF, CoIP

Species Specificity:

human

Cited Species:

human, mouse

Positive Controls:

WB : L02 cells, COLO 320 cells

IP : HepG2 cells,

IHC : human tonsillitis tissue,

IF-P : mouse liver tissue,

Note-IHC: suggested antigen retrieval with TE buffer pH 9.0; (*) Alternatively, antigen retrieval may be performed with citrate buffer pH 6.0

Background Information

IL8RB, also named as CXCR2, GRO/MGSA receptor, IL-8 receptor type 2, CDw128b, and CD182, belongs to the G-protein coupled receptor 1 family. It is a receptor for interleukin-8 which is a powerful neutrophil chemotactic factor. The binding of IL-8 to the receptor causes activation of neutrophils. This response is mediated via a G-protein that activates a phosphatidylinositol-calcium second messenger system. It binds to IL-8 with high affinity. IL8RB also binds with high affinity to CXCL3, GRO/MGSA, and NAP-2.

Notable Publications

| Author | Pubmed ID | Journal | Application |
|--------------|-----------|---------------|-------------|
| Ling Tang | 36175598 | Med Oncol | WB |
| Sainan Zhang | 34603292 | Front Immunol | IF |
| Shuang Ge | 34830293 | Int J Mol Sci | WB |

Storage

Storage:

Store at -20°C. Stable for one year after shipment.

Storage Buffer:

PBS with 0.02% sodium azide and 50% glycerol, pH7.3

Aliquoting is unnecessary for -20°C storage

*** 20ul sizes contain 0.1% BSA

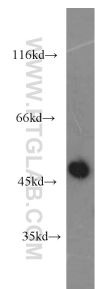
For technical support and original validation data for this product please contact:

T: 1 (888) 4PTGLAB (1-888-478-4522) (toll free in USA), or 1(312) 455-8498 (outside USA)

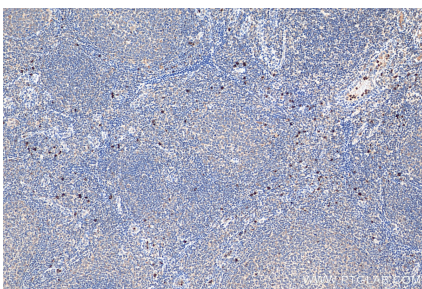
E: proteintech@ptglab.com
W: ptglab.com

This product is exclusively available under Proteintech Group brand and is not available to purchase from any other manufacturer.

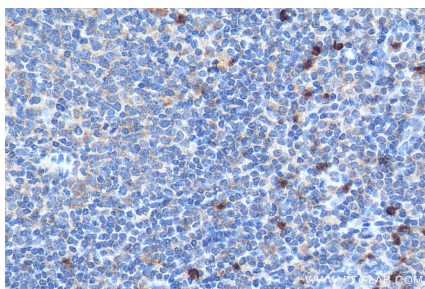
Selected Validation Data



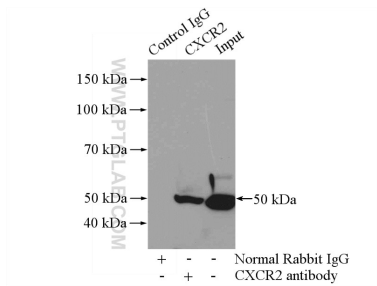
L02 cells were subjected to SDS PAGE followed by western blot with 20634-1-AP (CXCR2 antibody) at dilution of 1:2000 incubated at room temperature for 1.5 hours.



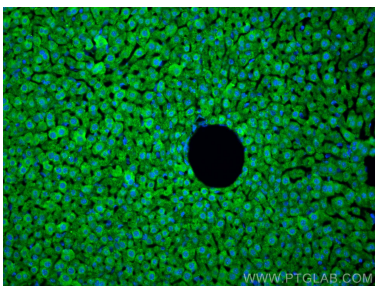
Immunohistochemical analysis of paraffin-embedded human tonsillitis tissue slide using 20634-1-AP (CXCR2 antibody) at dilution of 1:200 (under 10x lens). Heat mediated antigen retrieval with Tris-EDTA buffer (pH 9.0).



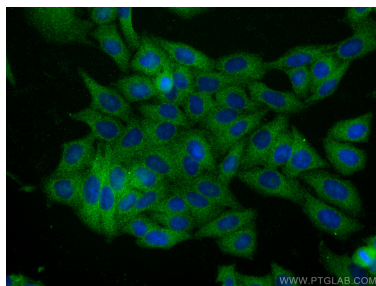
Immunohistochemical analysis of paraffin-embedded human tonsillitis tissue slide using 20634-1-AP (CXCR2 antibody) at dilution of 1:200 (under 40x lens). Heat mediated antigen retrieval with Tris-EDTA buffer (pH 9.0).



IP result of anti-CXCR2 (IP:20634-1-AP, 4ug; Detection:20634-1-AP 1:1000) with HepG2 cells lysate 3200ug.



Immunofluorescent analysis of (4% PFA) fixed paraffin-embedded mouse liver tissue using CXCR2 antibody (20634-1-AP) at dilution of 1:200 and CoraLite®488-Conjugated AffiniPure Goat Anti-Rabbit IgG(H+L). Heat mediated antigen retrieval with Tris-EDTA buffer (pH 9.0).



Immunofluorescent analysis of (-20°C Ethanol) fixed HepG2 cells using CXCR2 antibody (20634-1-AP) at dilution of 1:200 and CoraLite®488-Conjugated AffiniPure Goat Anti-Rabbit IgG(H+L) (SA00013-2).