

For Research Use Only

PPAPDC3 Polyclonal antibody

Catalog Number: 20635-1-AP

3 Publications



Basic Information

Catalog Number:

20635-1-AP

Size:

150ul, Concentration: 1200 ug/ml by Nanodrop and 487 ug/ml by Bradford method using BSA as the standard;

Source:

Rabbit

Isotype:

IgG

Immunogen Catalog Number:

AG14676

GenBank Accession Number:

BC006362

GeneID (NCBI):

84814

UNIPROT ID:

Q8NBV4

Full Name:

phosphatidic acid phosphatase type 2 domain containing 3

Calculated MW:

271 aa, 29 kDa

Observed MW:

29 kDa

Purification Method:

Antigen affinity purification

Recommended Dilutions:

WB 1:500-1:1000

IP 0.5-4.0 ug for 1.0-3.0 mg of total protein lysate

Applications

Tested Applications:

WB, IP, ELISA

Cited Applications:

WB

Species Specificity:

human, mouse, rat

Cited Species:

human

Positive Controls:

WB : mouse skeletal muscle tissue,

IP : mouse skeletal muscle tissue,

Background Information

PPAPDC3(Phosphatidic acid phosphatase type 2 domain-containing protein 3) is also named as C9orf67 and belongs to the PA-phosphatase related phosphoesterase family. It plays a role as negative regulator of myoblast differentiation, in part through effects on MTOR signaling.

Notable Publications

Author	Pubmed ID	Journal	Application
Anne T Bertrand	32244403	Cells	WB
Vanessa Todorow	36699009	Front Cell Dev Biol	WB
Zuleger Nikolaj N	23414781	Genome Biol	WB

Storage

Storage:

Store at -20°C. Stable for one year after shipment.

Storage Buffer:

PBS with 0.02% sodium azide and 50% glycerol pH 7.3.

Aliquoting is unnecessary for -20°C storage

*** 20ul sizes contain 0.1% BSA

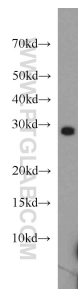
For technical support and original validation data for this product please contact:

T: 1 (888) 4PTGLAB (1-888-478-4522) (toll free in USA), or 1(312) 455-8498 (outside USA)

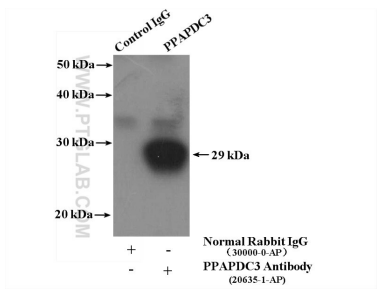
E: proteintech@ptglab.com
W: ptglab.com

This product is exclusively available under Proteintech Group brand and is not available to purchase from any other manufacturer.

Selected Validation Data



mouse skeletal muscle tissue were subjected to SDS PAGE followed by western blot with 20635-1-AP (PPAPDC3 antibody) at dilution of 1:800 incubated at room temperature for 1.5 hours.



IP result of anti-PPAPDC3 (IP:20635-1-AP, 4ug; Detection:20635-1-AP 1:800) with mouse skeletal muscle tissue lysate 4000ug.