

For Research Use Only

PTPIP5 1 Polyclonal antibody

Catalog Number: 20641-1-AP

Featured Product

10 Publications



Basic Information

Catalog Number: 20641-1-AP	GenBank Accession Number: BC008970	Purification Method: Antigen affinity purification
Size: 150ul , Concentration: 500 µg/ml by Nanodrop;	GeneID (NCBI): 55177	Recommended Dilutions: WB 1:500-1:3000 IP 0.5-4.0 ug for IP and 1:500-1:2000 for WB
Source: Rabbit	Full Name: family with sequence similarity 82, member A2	IHC 1:20-1:200 IF 1:10-1:100
Isotype: IgG	Calculated MW: 470 aa, 52 kDa	
Immunogen Catalog Number: AG14708	Observed MW: 52-60 kDa	

Applications

Tested Applications: IF, IHC, IP, WB, ELISA	Positive Controls: WB : HEK-293 cells, IP : HEK-293 cells, IHC : human skin tissue, human cervical cancer tissue IF : HepG2 cells,
Cited Applications: COIP, IF, IHC, WB	
Species Specificity: human	
Cited Species: human, rat, mouse, monkey	

Note-IHC: suggested antigen retrieval with TE buffer pH 9.0; (*) Alternatively, antigen retrieval may be performed with citrate buffer pH 6.0

Background Information

Notable Publications

Author	Pubmed ID	Journal	Application
Yan G Zhao	28890335	Mol Cell	COIP
Hana Antonicka	32877691	Cell Metab	WB
Sterling P Arjona	36419337	CNS Neurosci Ther	WB,IHC,IF

Storage

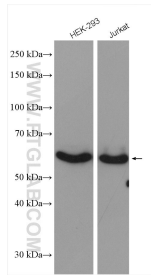
Storage:
Store at -20°C. Stable for one year after shipment.
Storage Buffer:
PBS with 0.02% sodium azide and 50% glycerol pH 7.3.
Aliquoting is unnecessary for -20°C storage

*** 20ul sizes contain 0.1% BSA

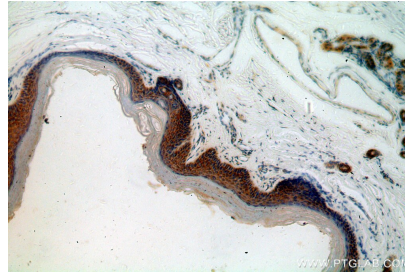
For technical support and original validation data for this product please contact:
T: 1 (888) 4PTGLAB (1-888-478-4522) (toll free in USA), or 1(312) 455-8498 (outside USA)
E: proteintech@ptglab.com
W: ptglab.com

This product is exclusively available under Proteintech Group brand and is not available to purchase from any other manufacturer.

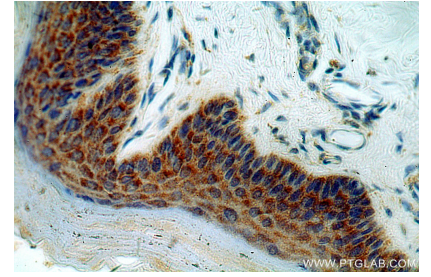
Selected Validation Data



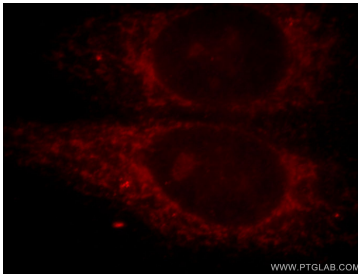
Various lysates were subjected to SDS PAGE followed by western blot with 20641-1-AP (PTPIP51 antibody) at dilution of 1:1500 incubated at room temperature for 1.5 hours.



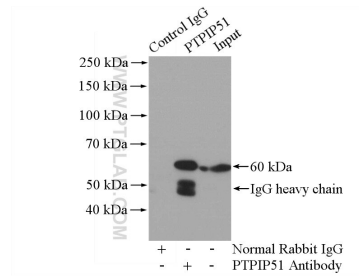
Immunohistochemical analysis of paraffin-embedded human skin using 20641-1-AP (PTPIP51 antibody) at dilution of 1:100 (under 10x lens).



Immunohistochemical analysis of paraffin-embedded human skin using 20641-1-AP (PTPIP51 antibody) at dilution of 1:100 (under 40x lens).



Immunofluorescent analysis of HepG2 cells, using FAM82A2 antibody 20641-1-AP at 1:25 dilution and Rhodamine-labeled goat anti-rabbit IgG (red).



IP Result of anti-PTPIP51 (IP:20641-1-AP, 4 μ g; Detection:20641-1-AP 1:1000) with HEK-293 cells lysate 1100 μ g.