

For Research Use Only

# CTR9 Polyclonal antibody

Catalog Number: 20672-1-AP



## Basic Information

Catalog Number:

20672-1-AP

Size:

150ul, Concentration: 550 ug/ml by Nanodrop and 333 ug/ml by Bradford method using BSA as the standard;

Source:

Rabbit

Isotype:

IgG

GenBank Accession Number:

NM\_014633

GeneID (NCBI):

9646

UNIPROT ID:

Q6PD62

Full Name:

Ctr9, Paf1/RNA polymerase II complex component, homolog (S. cerevisiae)

Calculated MW:

134 kDa

Observed MW:

130-150 kDa

Purification Method:

Antigen affinity purification

Recommended Dilutions:

WB 1:500-1:1000

IHC 1:20-1:200

## Applications

Tested Applications:

WB, IHC, ELISA

Species Specificity:

human, mouse

**Note-IHC: suggested antigen retrieval with TE buffer pH 9.0; (\*) Alternatively, antigen retrieval may be performed with citrate buffer pH 6.0**

Positive Controls:

WB: HeLa cells,

IHC: human ovary tumor tissue,

## Background Information

CTR9, also named as KIAA0155 and SH2BP1, contains 16 TPR repeats. It is widely expressed. The antibody recognizes the C-term of CTR9.

## Storage

Storage:

Store at -20°C. Stable for one year after shipment.

Storage Buffer:

PBS with 0.02% sodium azide and 50% glycerol pH 7.3.

Aliquoting is unnecessary for -20°C storage

\*\*\* 20ul sizes contain 0.1% BSA

For technical support and original validation data for this product please contact:

T: 1 (888) 4PTGLAB (1-888-478-4522) (toll free in USA), or 1(312) 455-8498 (outside USA)

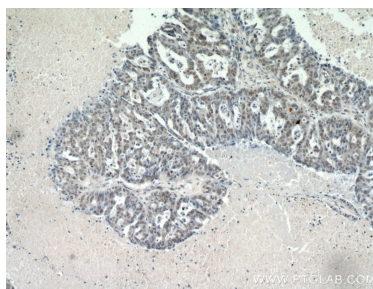
E: [proteintech@ptglab.com](mailto:proteintech@ptglab.com)  
W: [ptglab.com](http://ptglab.com)

This product is exclusively available under Proteintech Group brand and is not available to purchase from any other manufacturer.

## Selected Validation Data



HeLa cells were subjected to SDS PAGE followed by western blot with 20672-1-AP (CTR9 antibody) at dilution of 1:500 incubated at room temperature for 1.5 hours.



Immunohistochemical analysis of paraffin-embedded human ovary tumor using 20672-1-AP (CTR9 antibody) at dilution of 1:50 (under 10x lens).