

For Research Use Only

IL-17RB Polyclonal antibody, PBS Only

Catalog Number: 20673-1-PBS



Basic Information

Catalog Number:

20673-1-PBS

Size:

100ug, Concentration: 1 mg/ml by Nanodrop;

Source:

Rabbit

Isotype:

IgG

GenBank Accession Number:

NM_018725

GeneID (NCBI):

55540

UNIPROT ID:

Q9NRM6

Full Name:

interleukin 17 receptor B

Calculated MW:

56 kDa

Observed MW:

56-60 kDa

Purification Method:

Antigen affinity purification

Applications

Tested Applications:

WB, IHC, IF/ICC, Indirect ELISA

Species Specificity:

human

Background Information

IL17RB, also named as CRL4, EVI27 and IL17BR, is a receptor for the proinflammatory cytokines IL17B and IL17E. IL17RB may play a role in controlling the growth and/or differentiation of hematopoietic cells. IL17RB has two isoforms with MW 56 kDa (isoform 1) and 32 kDa (isoform 2). The antibody is specific to IL17RB.

Storage

Storage:

Store at -80°C.

Storage Buffer:

PBS Only

For technical support and original validation data for this product please contact:

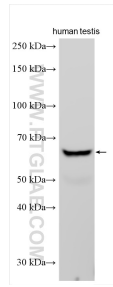
T: 1 (888) 4PTGLAB (1-888-478-4522) (toll free in USA), or 1(312) 455-8498 (outside USA)

E: proteintech@ptglab.com

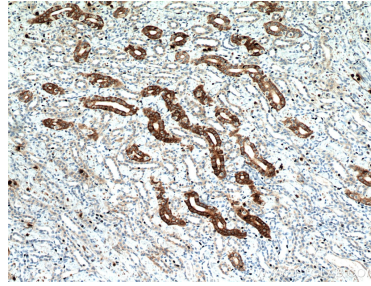
W: ptglab.com

This product is exclusively available under Proteintech Group brand and is not available to purchase from any other manufacturer.

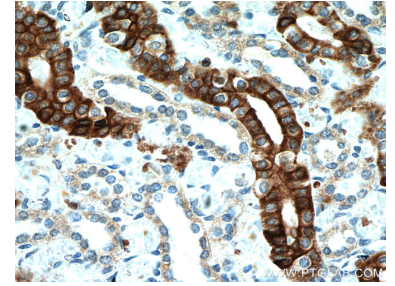
Selected Validation Data



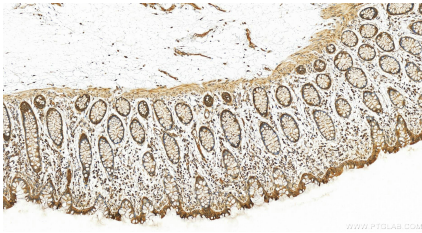
Human testis tissue was subjected to SDS PAGE followed by western blot with 20673-1-AP (IL-17RB antibody) at dilution of 1:1000 incubated at room temperature for 1.5 hours. This data was developed using the same antibody clone with 20673-1-PBS in a different storage buffer formulation.



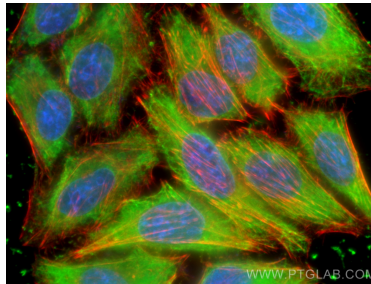
Immunohistochemical analysis of paraffin-embedded human kidney using 20673-1-AP (IL17RB antibody) at dilution of 1:200 (under 10x lens). This data was developed using the same antibody clone with 20673-1-PBS in a different storage buffer formulation.



Immunohistochemical analysis of paraffin-embedded human kidney using 20673-1-AP (IL17RB antibody) at dilution of 1:200 (under 40x lens). This data was developed using the same antibody clone with 20673-1-PBS in a different storage buffer formulation.



Immunohistochemical analysis of paraffin-embedded human colon tissue slide using 20673-1-AP (IL-17RB antibody) at dilution of 1:200 (under 20x lens). Heat mediated antigen retrieval with Tris-EDTA buffer (pH 9.0). This data was developed using the same antibody clone with 20673-1-PBS in a different storage buffer formulation.



Immunofluorescent analysis of (-20°C Ethanol) fixed HepG2 cells using IL-17RB antibody (20673-1-AP) at dilution of 1:400 and CoraLite®488-Conjugated AffiniPure Goat Anti-Rabbit IgG(H+L), CL594-Phalloidin (red). This data was developed using the same antibody clone with 20673-1-PBS in a different storage buffer formulation.