

For Research Use Only

SLC16A2 Polyclonal antibody

Catalog Number: 20676-1-AP **6 Publications**



Basic Information

Catalog Number: 20676-1-AP	GenBank Accession Number: NM_006517	Purification Method: Antigen affinity purification
Size: 150ul , Concentration: 350 µg/ml by Nanodrop and 167 µg/ml by Bradford method using BSA as the standard;	GeneID (NCBI): 6567	Recommended Dilutions: WB 1:500-1:3000
Source: Rabbit	Full Name: solute carrier family 16, member 2 (monocarboxylic acid transporter 8)	
Isotype: IgG	Calculated MW: 60 kDa	
	Observed MW: 50-65 kDa	

Applications

Tested Applications: WB, ELISA	Positive Controls: WB : mouse kidney tissue, L02 cells, mouse heart tissue
Cited Applications: WB	
Species Specificity: human, mouse, rat	
Cited Species: human, rat, mouse	

Background Information

SLC16A2, also named as MCT8 and XPCT, belongs to the major facilitator superfamily and Monocarboxylate porter (TC 2.A.1.13) family. SLC16A2 is a very active and specific thyroid hormone transporter. SLC16A2 stimulates cellular uptake of thyroxine (T4), triiodothyronine (T3), reverse triiodothyronine (rT3) and diiodothyronine. It does not transport Leu, Phe, Trp or Tyr. Defects in SLC16A2 are the cause of monocarboxylate transporter 8 deficiency (MCT8 deficiency). This antibody is specific to SLC16A2.

Notable Publications

Author	Pubmed ID	Journal	Application
Evelin Major	34638630	Int J Mol Sci	WB
Alexandra Schutkowski	25390336	PLoS One	WB
Xue Zhao	35222046	Front Pharmacol	WB

Storage

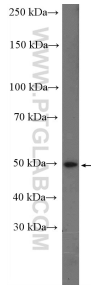
Storage:
Store at -20°C. Stable for one year after shipment.
Storage Buffer:
PBS with 0.02% sodium azide and 50% glycerol pH 7.3.
Aliquoting is unnecessary for -20°C storage

***** 20ul sizes contain 0.1% BSA**

For technical support and original validation data for this product please contact:
T: 1 (888) 4PTGLAB (1-888-478-4522) (toll free in USA), or 1(312) 455-8498 (outside USA)
E: proteintech@ptglab.com
W: ptglab.com

This product is exclusively available under Proteintech Group brand and is not available to purchase from any other manufacturer.

Selected Validation Data



mouse kidney tissue were subjected to SDS PAGE followed by western blot with 20676-1-AP (SLC16A2 Antibody) at dilution of 1:1500 incubated at room temperature for 1.5 hours.