

For Research Use Only

# LIS1 Polyclonal antibody

Catalog Number: 20678-1-AP

1 Publications



## Basic Information

<b>Catalog Number:</b> 20678-1-AP	<b>GenBank Accession Number:</b> NM_000430	<b>Purification Method:</b> Antigen affinity purification
<b>Size:</b> 150ul , Concentration: 950 ug/ml by Nanodrop;	<b>GeneID (NCBI):</b> 5048	<b>Recommended Dilutions:</b> WB 1:500-1:1000 IHC 1:50-1:500
<b>Source:</b> Rabbit	<b>UNIPROT ID:</b> P43034	
<b>Isotype:</b> IgG	<b>Full Name:</b> platelet-activating factor acetylhydrolase, isoform Ib, alpha subunit 45kDa	
	<b>Calculated MW:</b> 47 kDa	
	<b>Observed MW:</b> 45-50 kDa	

## Applications

<b>Tested Applications:</b> WB, IHC, ELISA	<b>Positive Controls:</b>
<b>Cited Applications:</b> WB, IHC	<b>WB :</b> mouse brain tissue, rat brain tissue
<b>Species Specificity:</b> human, mouse, rat	<b>IHC :</b> mouse brain tissue,
<b>Cited Species:</b> human, mouse	

**Note-IHC: suggested antigen retrieval with TE buffer pH 9.0; (\*) Alternatively, antigen retrieval may be performed with citrate buffer pH 6.0**

## Background Information

Platelet-activating factor acetylhydrolase 1B subunit alpha (LIS1), a critical mediator of neuronal migration in developing brain, is expressed throughout life. LIS1 forms a homodimer that interacts directly with the dynein complex and is essential for its enrichment at dynamic microtubule plus ends in mammalian cells. In addition to regulating the association of dynein with microtubule plus ends, LIS1 is required for efficient transport of many dynein-associated cargos and proper localization of Golgi complexes, endosomes, lysosomes, and mitochondria. The LIS1 protein has a calculated molecular mass of ~45 kDa.(PMID: 29150182, PMID: 29562183, PMID: 15800059)

## Notable Publications

Author	Pubmed ID	Journal	Application
Guochao Liu	38344318	Iran J Biotechnol	WB,IHC

## Storage

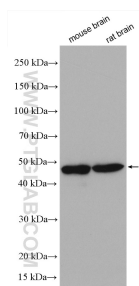
**Storage:**  
Store at -20°C. Stable for one year after shipment.  
**Storage Buffer:**  
PBS with 0.02% sodium azide and 50% glycerol pH 7.3.  
Aliquoting is unnecessary for -20°C storage

\*\*\* 20ul sizes contain 0.1% BSA

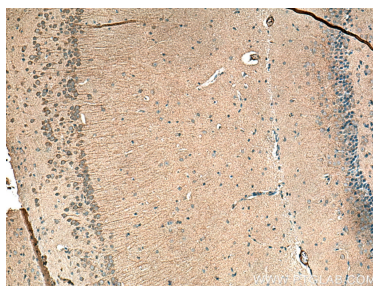
For technical support and original validation data for this product please contact:  
T: 1 (888) 4PTGLAB (1-888-478-4522) (toll free in USA), or 1(312) 455-8498 (outside USA)  
E: proteintech@ptglab.com  
W: ptglab.com

This product is exclusively available under Proteintech Group brand and is not available to purchase from any other manufacturer.

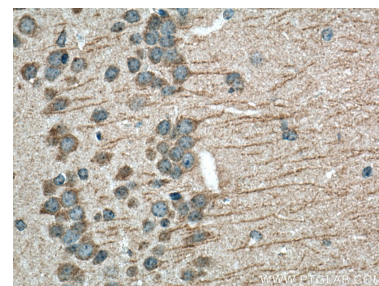
## Selected Validation Data



Various lysates were subjected to SDS PAGE followed by western blot with 20678-1-AP (LIS1 antibody) at dilution of 1:600 incubated at room temperature for 1.5 hours.



Immunohistochemical analysis of paraffin-embedded mouse brain tissue slide using 20678-1-AP (LIS1 antibody) at dilution of 1:200 (under 10x lens). Heat mediated antigen retrieval with Tris-EDTA buffer (pH 9.0).



Immunohistochemical analysis of paraffin-embedded mouse brain tissue slide using 20678-1-AP (LIS1 antibody) at dilution of 1:200 (under 40x lens). Heat mediated antigen retrieval with Tris-EDTA buffer (pH 9.0).