

For Research Use Only

REPS2 Polyclonal antibody

Catalog Number: 20699-1-AP **1 Publications**



Basic Information

Catalog Number: 20699-1-AP	GenBank Accession Number: NM_004726	Purification Method: Antigen affinity purification
Size: 150ul , Concentration: 1200 µg/ml by Nanodrop and 560 µg/ml by Bradford method using BSA as the standard;	GeneID (NCBI): 9185	Recommended Dilutions: WB 1:500-1:2000 IF 1:10-1:100
Source: Rabbit	Full Name: RALBP1 associated Eps domain containing 2	
Isotype: IgG	Calculated MW: 72 kDa	
	Observed MW: 72 kDa, 55 kDa, 30 kDa	

Applications

Tested Applications: IF, WB, ELISA	Positive Controls: WB : mouse brain tissue, human testis tissue, LNCaP cells, mouse kidney tissue
Cited Applications: IF	IF : HepG2 cells,
Species Specificity: human, mouse	
Cited Species: human	

Background Information

REPS2, also named as POB1, is involved in growth factor signaling through its influence on the Ral signaling pathway. The antibody is specific to REPS2.

Notable Publications

Author	Pubmed ID	Journal	Application
Chan Wen	35690292	Cell Signal	IF

Storage

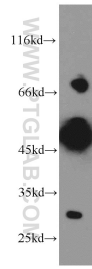
Storage:
Store at -20°C. Stable for one year after shipment.
Storage Buffer:
PBS with 0.02% sodium azide and 50% glycerol pH 7.3.
Aliquoting is unnecessary for -20°C storage

***** 20ul sizes contain 0.1% BSA**

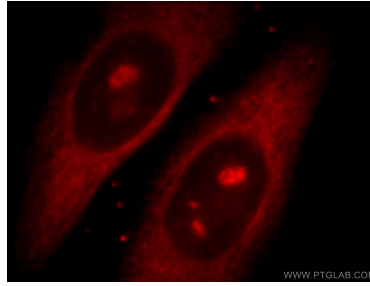
For technical support and original validation data for this product please contact:
T: 1 (888) 4PTGLAB (1-888-478-4522) (toll free in USA), or 1(312) 455-8498 (outside USA)
E: proteintech@ptglab.com
W: ptglab.com

This product is exclusively available under Proteintech Group brand and is not available to purchase from any other manufacturer.

Selected Validation Data



mouse brain tissue were subjected to SDS PAGE followed by western blot with 20699-1-AP (REPS2 antibody) at dilution of 1:300 incubated at room temperature for 1.5 hours.



Immunofluorescent analysis of HepG2 cells, using REPS2 antibody 20699-1-AP at 1:25 dilution and Rhodamine-labeled goat anti-rabbit IgG (red).