

For Research Use Only

IRS2 Polyclonal antibody, PBS Only

Catalog Number:20702-1-PBS



Basic Information

Catalog Number:

20702-1-PBS

Size:

100ug , Concentration: 1 mg/ml by Nanodrop;

Source:

Rabbit

Isotype:

IgG

GenBank Accession Number:

NM_003749

GeneID (NCBI):

8660

UNIPROT ID:

Q9Y4H2

Full Name:

IRS2

Calculated MW:

137 kDa

Observed MW:

150-185 kDa

Purification Method:

Antigen affinity purification

Applications

Tested Applications:

WB, IHC, Indirect ELISA

Species Specificity:

human, mouse, rat

Background Information

The family of INS receptor substrates (IRS) consists of four proteins (IRS-1-IRS-4), which were initially characterized as typical cytosolic adaptor proteins involved in INS receptor (IR) and INS-like growth factor I receptor (IGF-IR) signaling. Impaired glucose tolerance and INS resistance, and thus type 2 diabetes were demonstrated in Irs2 knockout mice. In vivo data also indicated that the regulation of beta-cell mass involves IRS2, while IRS1 is only required for proper INS production in beta-cells. IRS2, like IRS1, has a predicted molecular weight of 137 kDa, however, as a result of its extensive serine phosphorylation it separates on a SDS-PAGE as a band of approximately 150-185 kDa.

Storage

Storage:

Store at -80°C.

Storage Buffer:

PBS only, pH7.3

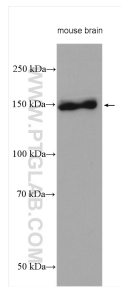
For technical support and original validation data for this product please contact:

T: 1 (888) 4PTGLAB (1-888-478-4522) (toll free in USA), or 1(312) 455-8498 (outside USA)

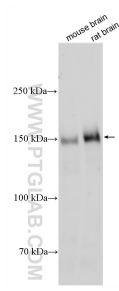
E: proteintech@ptglab.com
W: ptglab.com

This product is exclusively available under Proteintech Group brand and is not available to purchase from any other manufacturer.

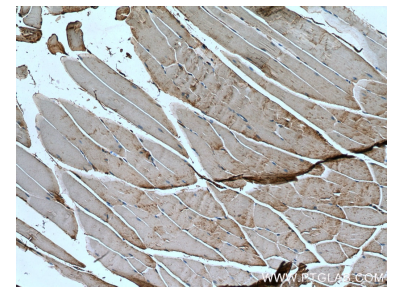
Selected Validation Data



mouse brain tissue were subjected to SDS PAGE followed by western blot with 20702-1-AP (IRS2 antibody) at dilution of 1:500 incubated at room temperature for 1.5 hours. This data was developed using the same antibody clone with 20702-1-PBS in a different storage buffer formulation.



Various lysates were subjected to SDS PAGE followed by western blot with 20702-1-AP (IRS2 antibody) at dilution of 1:1000 incubated at room temperature for 1.5 hours. This data was developed using the same antibody clone with 20702-1-PBS in a different storage buffer formulation.



Immunohistochemical analysis of paraffin-embedded mouse skeletal muscle tissue slide using 20702-1-AP (IRS2 antibody) at dilution of 1:200 (under 10x lens). This data was developed using the same antibody clone with 20702-1-PBS in a different storage buffer formulation.