

For Research Use Only

TOP1 Polyclonal antibody

Catalog Number: 20705-1-AP **18 Publications**



Basic Information

Catalog Number: 20705-1-AP	GenBank Accession Number: NM_003286	Purification Method: Antigen affinity purification
Size: 150ul , Concentration: 700 ug/ml by Nanodrop and 373 ug/ml by Bradford method using BSA as the standard;	GeneID (NCBI): 7150	Recommended Dilutions: WB 1:1000-1:4000 IHC 1:500-1:2000 IF/ICC 1:300-1:1200
Source: Rabbit	UNIPROT ID: P11387	
Isotype: IgG	Full Name: topoisomerase (DNA) I	
	Calculated MW: 91 kDa	
	Observed MW: 90 kDa	

Applications

Tested Applications: WB, IHC, IF/ICC, ELISA	Positive Controls:
Cited Applications: WB, IHC, IF	WB : L02 cells,
Species Specificity: human	IHC : human stomach cancer tissue, human colon cancer tissue, human cervical cancer tissue, human ovary tumor tissue
Cited Species: human, mouse	IF/ICC : HepG2 cells,

Note-IHC: suggested antigen retrieval with TE buffer pH 9.0; (*) Alternatively, antigen retrieval may be performed with citrate buffer pH 6.0

Background Information

TOP1 belongs to the eukaryotic type I topoisomerase family. The reaction catalyzed by topoisomerases leads to the conversion of one topological isomer of DNA to another. A chromosomal aberration involving TOP1 is found in a form of therapy-related myelodysplastic syndrome. The antibody is specific to TOP1.

Notable Publications

Author	Pubmed ID	Journal	Application
Huijing Yin	31501431	Cell Death Dis	WB
Jiao Li	31758083	Sci Rep	WB
Jingjun Wu	26612655	Chem Biol Interact	WB

Storage

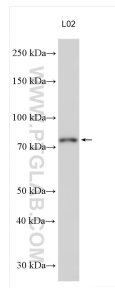
Storage:
Store at -20°C. Stable for one year after shipment.
Storage Buffer:
PBS with 0.02% sodium azide and 50% glycerol pH 7.3.
Aliquoting is unnecessary for -20°C storage

***** 20ul sizes contain 0.1% BSA**

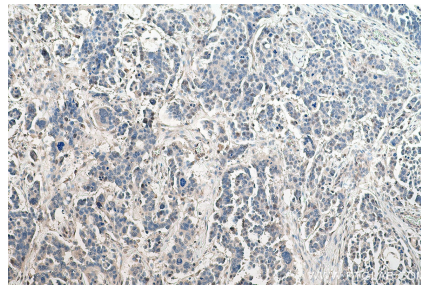
For technical support and original validation data for this product please contact:
T: 1 (888) 4PTGLAB (1-888-478-4522) (toll free in USA), or 1(312) 455-8498 (outside USA)
E: proteintech@ptglab.com
W: ptglab.com

This product is exclusively available under Proteintech Group brand and is not available to purchase from any other manufacturer.

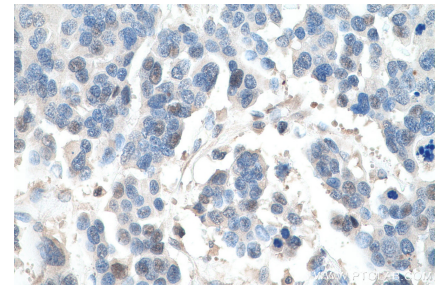
Selected Validation Data



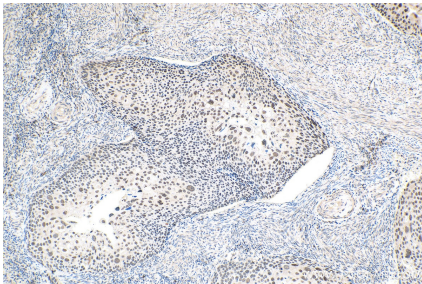
Various lysates were subjected to SDS PAGE followed by western blot with 20705-1-AP (TOP1 antibody) at dilution of 1:2000 incubated at room temperature for 1.5 hours.



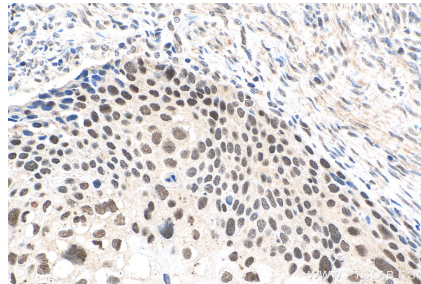
Immunohistochemical analysis of paraffin-embedded human colon cancer tissue slide using 20705-1-AP (TOP1 antibody) at dilution of 1:2000 (under 10x lens). Heat mediated antigen retrieval with Tris-EDTA buffer (pH 9.0).



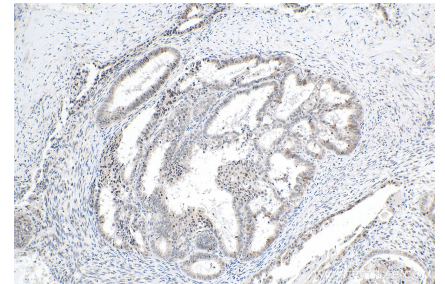
Immunohistochemical analysis of paraffin-embedded human colon cancer tissue slide using 20705-1-AP (TOP1 antibody) at dilution of 1:2000 (under 40x lens). Heat mediated antigen retrieval with Tris-EDTA buffer (pH 9.0).



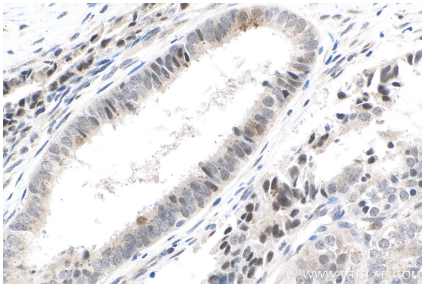
Immunohistochemical analysis of paraffin-embedded human cervical cancer tissue slide using 20705-1-AP (TOP1 antibody) at dilution of 1:1000 (under 10x lens). Heat mediated antigen retrieval with Tris-EDTA buffer (pH 9.0).



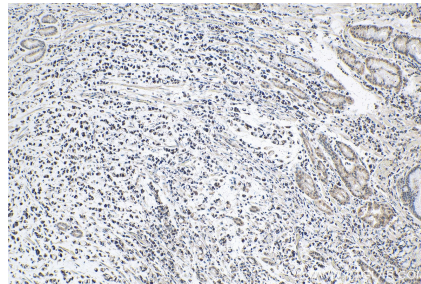
Immunohistochemical analysis of paraffin-embedded human cervical cancer tissue slide using 20705-1-AP (TOP1 antibody) at dilution of 1:1000 (under 40x lens). Heat mediated antigen retrieval with Tris-EDTA buffer (pH 9.0).



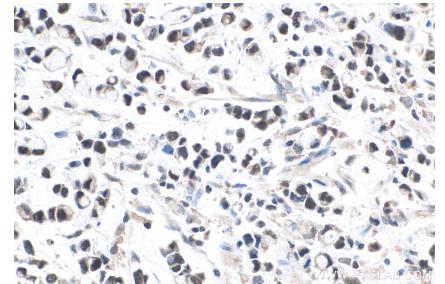
Immunohistochemical analysis of paraffin-embedded human ovary tumor tissue slide using 20705-1-AP (TOP1 antibody) at dilution of 1:1000 (under 10x lens). Heat mediated antigen retrieval with Tris-EDTA buffer (pH 9.0).



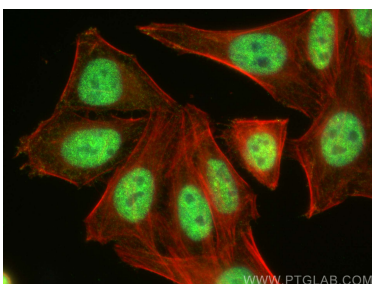
Immunohistochemical analysis of paraffin-embedded human ovary tumor tissue slide using 20705-1-AP (TOP1 antibody) at dilution of 1:1000 (under 40x lens). Heat mediated antigen retrieval with Tris-EDTA buffer (pH 9.0).



Immunohistochemical analysis of paraffin-embedded human stomach cancer tissue slide using 20705-1-AP (TOP1 antibody) at dilution of 1:1000 (under 10x lens). Heat mediated antigen retrieval with Tris-EDTA buffer (pH 9.0).



Immunohistochemical analysis of paraffin-embedded human stomach cancer tissue slide using 20705-1-AP (TOP1 antibody) at dilution of 1:1000 (under 40x lens). Heat mediated antigen retrieval with Tris-EDTA buffer (pH 9.0).



Immunofluorescent analysis of (4% PFA) fixed HepG2 cells using TOP1 antibody (20705-1-AP) at dilution of 1:600 and Multi-rAb CoraLite® Plus 488-Goat Anti-Rabbit Recombinant Secondary Antibody (H+L) (RGAR002), CL594-phalloidin (red).