

For Research Use Only

GHR Polyclonal antibody

Catalog Number: 20713-1-AP

Featured Product

7 Publications



Basic Information

Catalog Number:

20713-1-AP

Size:

150ul, Concentration: 400 ug/ml by Nanodrop and 360 ug/ml by Bradford method using BSA as the standard;

Source:

Rabbit

Isotype:

IgG

GenBank Accession Number:

NM_000163

GeneID (NCBI):

2690

UNIPROT ID:

P10912

Full Name:

GH binding protein

Calculated MW:

72 kDa

Observed MW:

120 kDa

Purification Method:

Antigen affinity purification

Recommended Dilutions:

WB 1:500-1:1000

IHC 1:50-1:500

IF/ICC 1:50-1:500

Applications

Tested Applications:

WB, IHC, IF/ICC, ELISA

Cited Applications:

WB, IHC

Species Specificity:

human, pig

Cited Species:

human, pig, rabbit

Positive Controls:

WB : pig liver tissue, pig lung tissue

IHC : human liver tissue,

IF/ICC : HepG2 cells,

Note-IHC: suggested antigen retrieval with TE buffer pH 9.0; (*) Alternatively, antigen retrieval may be performed with citrate buffer pH 6.0

Background Information

GH is a peptide hormone with many pleiotropic actions, including the regulation of metabolism, postnatal growth, cognition, immune, cardiac and renal systems and gut function (PMID: 26059750). GH exerts these actions primarily through alterations in gene expression, initiated by activation of its membrane receptor GHR and the resultant activation of the associated JAK2 and Src family kinases. GH receptor (GHR) is a member of the cytokine receptor family. Mutations in GHR gene have been associated with Laron syndrome, also known as the GH insensitivity syndrome (GHIS), a disorder characterized by short stature.

Notable Publications

Author	Pubmed ID	Journal	Application
Mo Cheng	31725956	FEBS Open Bio	WB
Hongmei Zhang	34252534	Cell Signal	WB
Hong-Zhu Yan	33492754	J Cell Mol Med	WB

Storage

Storage:

Store at -20°C. Stable for one year after shipment.

Storage Buffer:

PBS with 0.02% sodium azide and 50% glycerol pH 7.3.

Aliquoting is unnecessary for -20°C storage

*** 20ul sizes contain 0.1% BSA

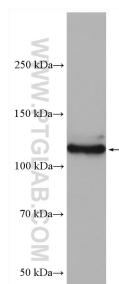
For technical support and original validation data for this product please contact:

T: 1 (888) 4PTGLAB (1-888-478-4522) (toll free in USA), or 1(312) 455-8498 (outside USA)

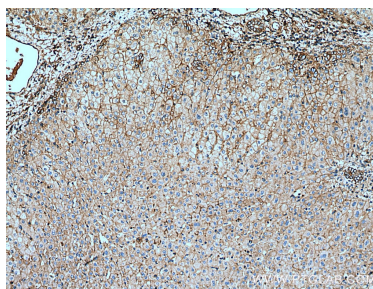
E: proteintech@ptglab.com
W: ptglab.com

This product is exclusively available under Proteintech Group brand and is not available to purchase from any other manufacturer.

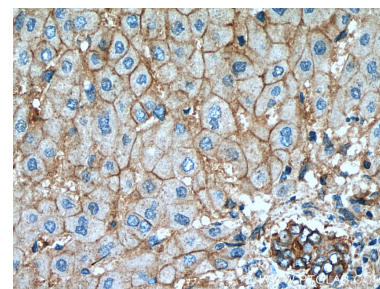
Selected Validation Data



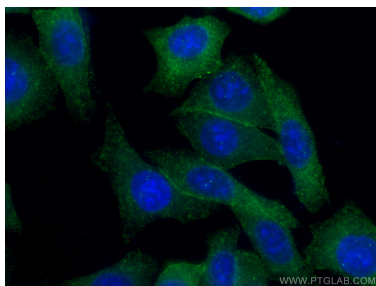
pig liver tissue were subjected to SDS PAGE followed by western blot with 20713-1-AP (GHR antibody) at dilution of 1:600 incubated at room temperature for 1.5 hours.



Immunohistochemical analysis of paraffin-embedded human liver tissue slide using 20713-1-AP (GHR antibody) at dilution of 1:200 (under 10x lens). Heat mediated antigen retrieval with Tris-EDTA buffer (pH 9.0).



Immunohistochemical analysis of paraffin-embedded human liver tissue slide using 20713-1-AP (GHR antibody) at dilution of 1:200 (under 40x lens). Heat mediated antigen retrieval with Tris-EDTA buffer (pH 9.0).



Immunofluorescent analysis of (-20°C Ethanol) fixed HepG2 cells using 20713-1-AP (GHR antibody), at dilution of 1:200 and Coralite®488-Conjugated Goat Anti-Rabbit IgG(H+L).