

For Research Use Only

GHRHR Polyclonal antibody

Catalog Number: 20715-1-AP



Basic Information

Catalog Number: 20715-1-AP	GenBank Accession Number: NM_000823	Purification Method: Antigen affinity purification
Size: 150ul , Concentration: 400 µg/ml by Nanodrop and 307 µg/ml by Bradford method using BSA as the standard;	GeneID (NCBI): 2692	Recommended Dilutions: WB 1:500-1:1000 IHC 1:50-1:500
Source: Rabbit	Full Name: GHRH receptor	
Isotype: IgG	Calculated MW: 47 kDa	
	Observed MW: 48 kDa	

Applications

Tested Applications: IHC, WB, ELISA	Positive Controls: WB : HEK-293 cells, IHC : human kidney tissue,
Species Specificity: human, mouse, rat	
Note-IHC: suggested antigen retrieval with TE buffer pH 9.0; (*) Alternatively, antigen retrieval may be performed with citrate buffer pH 6.0	

Background Information

GHRHR, also named as GRFR, belongs to the G-protein coupled receptor 2 family. It is a receptor for GRF, coupled to G proteins which activate adenylyl cyclase. GHRHR stimulates somatotroph cell growth, GH gene transcription and GH secretion. The antibody is specific to GHRHR. The antibody is specific to GHRHR.

Storage

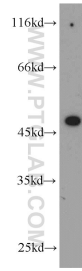
Storage:
Store at -20°C. Stable for one year after shipment.
Storage Buffer:
PBS with 0.02% sodium azide and 50% glycerol pH 7.3.
Aliquoting is unnecessary for -20°C storage

*** 20ul sizes contain 0.1% BSA

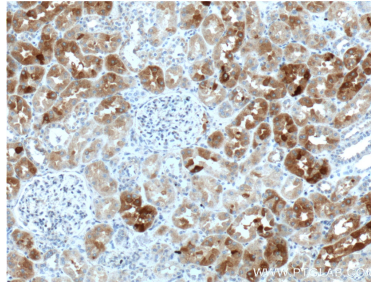
For technical support and original validation data for this product please contact:
T: 1 (888) 4PTGLAB (1-888-478-4522) (toll free in USA), or 1(312) 455-8498 (outside USA)
E: proteintech@ptglab.com
W: ptglab.com

This product is exclusively available under Proteintech Group brand and is not available to purchase from any other manufacturer.

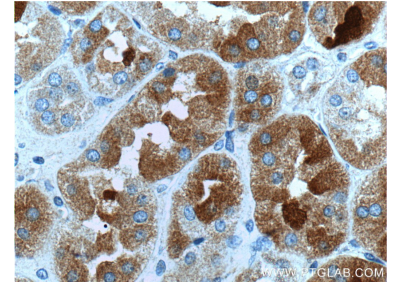
Selected Validation Data



HEK-293 cells were subjected to SDS PAGE followed by western blot with 20715-1-AP (GHRHR antibody) at dilution of 1:500 incubated at room temperature for 1.5 hours.



Immunohistochemical analysis of paraffin-embedded human kidney tissue slide using 20715-1-AP (GHRHR Antibody) at dilution of 1:100 (under 10x lens).



Immunohistochemical analysis of paraffin-embedded human kidney tissue slide using 20715-1-AP (GHRHR Antibody) at dilution of 1:100 (under 40x lens).