

For Research Use Only

GHRHR Polyclonal antibody, PBS Only

Catalog Number: 20715-1-PBS

Featured Product



Basic Information

Catalog Number:

20715-1-PBS

Size:

100ug, Concentration: 1 mg/ml by Nanodrop;

Source:

Rabbit

Isotype:

IgG

GenBank Accession Number:

NM_000823

GeneID (NCBI):

2692

UNIPROT ID:

Q02643

Full Name:

GHRH receptor

Calculated MW:

47 kDa

Observed MW:

48 kDa

Purification Method:

Antigen affinity purification

Applications

Tested Applications:

WB, IHC, Indirect ELISA

Species Specificity:

human, mouse, rat

Background Information

GHRHR, also named GRFR, belongs to the G-protein coupled receptor 2 family. It is a GRF receptor coupled to G proteins that activate adenylyl cyclase. GHRHR stimulates somatotroph cell growth, GH gene transcription, and GH secretion. The antibody is specific to GHRHR. The antibody is specific to GHRHR.

Storage

Storage:

Store at -80°C.

Storage Buffer:

PBS only, pH7.3

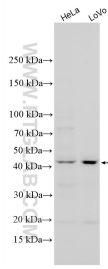
For technical support and original validation data for this product please contact:

T: 1 (888) 4PTGLAB (1-888-478-4522) (toll free in USA), or 1(312) 455-8498 (outside USA)

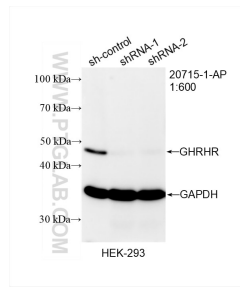
E: proteintech@ptglab.com
W: ptglab.com

This product is exclusively available under Proteintech Group brand and is not available to purchase from any other manufacturer.

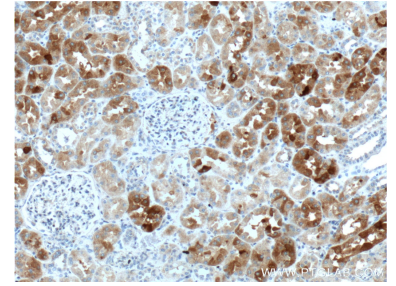
Selected Validation Data



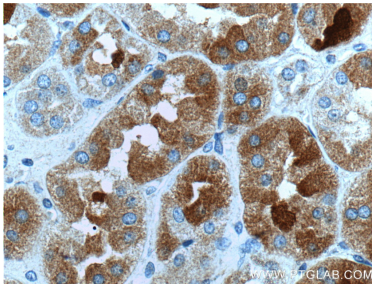
Various lysates were subjected to SDS PAGE followed by western blot with 20715-1-AP (GHRHR antibody) at dilution of 1:500 incubated at room temperature for 1.5 hours. This data was developed using the same antibody clone with 20715-1-PBS in a different storage buffer formulation.



WB result of GHRHR antibody (20715-1-AP; 1:600; incubated at room temperature for 1.5 hours) with sh-Control and sh-GHRHR transfected HEK-293 cells. This data was developed using the same antibody clone with 20715-1-PBS in a different storage buffer formulation.



Immunohistochemical analysis of paraffin-embedded human kidney tissue slide using 20715-1-AP (GHRHR Antibody) at dilution of 1:100 (under 10x lens). This data was developed using the same antibody clone with 20715-1-PBS in a different storage buffer formulation.



Immunohistochemical analysis of paraffin-embedded human kidney tissue slide using 20715-1-AP (GHRHR Antibody) at dilution of 1:100 (under 40x lens). This data was developed using the same antibody clone with 20715-1-PBS in a different storage buffer formulation.