

For Research Use Only

# TMC1 Polyclonal antibody

Catalog Number: 20718-1-AP



## Basic Information

<b>Catalog Number:</b> 20718-1-AP	<b>GenBank Accession Number:</b> NM_138691	<b>Purification Method:</b> Antigen affinity purification
<b>Size:</b> 150ul , Concentration: 600 µg/ml by Nanodrop and 333 µg/ml by Bradford method using BSA as the standard;	<b>GeneID (NCBI):</b> 117531	<b>Recommended Dilutions:</b> WB 1:300-1:1000 IHC 1:20-1:200 IF 1:50-1:500
<b>Source:</b> Rabbit	<b>Full Name:</b> transmembrane channel-like 1	
<b>Isotype:</b> IgG	<b>Calculated MW:</b> 88 kDa	
	<b>Observed MW:</b> 88 kDa	

## Applications

**Tested Applications:**  
IF, IHC, WB, ELISA

**Species Specificity:**  
human, mouse, rat

**Note-IHC: suggested antigen retrieval with TE buffer pH 9.0; (\*) Alternatively, antigen retrieval may be performed with citrate buffer pH 6.0**

**Positive Controls:**

**WB :** mouse brain tissue,  
**IHC :** human placenta tissue,  
**IF :** mouse brain tissue,

## Background Information

Transmembrane channel-like protein 1 (TMC1), is an integral membrane protein with six transmembrane domains and cytoplasmically oriented N- and C- termini (PMID: 20672865). Human TMC1 and mouse Tmc1 mRNA expression were detected in human fetal cochlea and inner-ear tissue of postnatal mouse, respectively. TMC1 is required for cochlear hair-cell function (PMID: 11850618). It is a component of hair cell transduction channels and contributes to permeation properties (PMID: 23871232). Mutations in TMC1 gene can cause progressive postlingual hearing loss and profound prelingual deafness (PMID: 11850618). The antibody is specific to TMC1.

## Storage

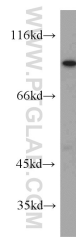
**Storage:**  
Store at -20°C. Stable for one year after shipment.  
**Storage Buffer:**  
PBS with 0.02% sodium azide and 50% glycerol pH 7.3.  
**Aliquoting is unnecessary for -20°C storage**

**\*\*\* 20ul sizes contain 0.1% BSA**

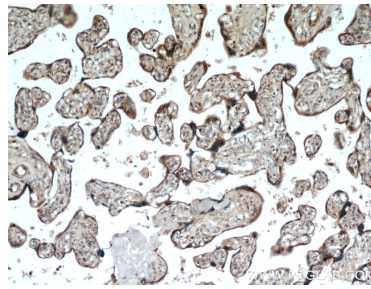
For technical support and original validation data for this product please contact:  
T: 1 (888) 4PTGLAB (1-888-478-4522) (toll free in USA), or 1(312) 455-8498 (outside USA)  
E: proteintech@ptglab.com  
W: ptglab.com

**This product is exclusively available under Proteintech Group brand and is not available to purchase from any other manufacturer.**

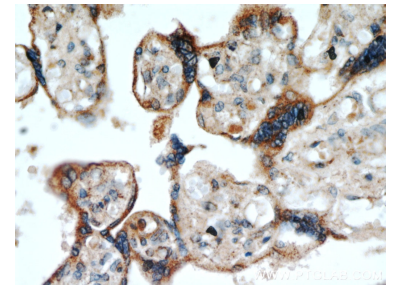
## Selected Validation Data



mouse brain tissue were subjected to SDS PAGE followed by western blot with 20718-1-AP (TMC1 antibody) at dilution of 1:300 incubated at room temperature for 1.5 hours.



Immunohistochemical analysis of paraffin-embedded human placenta using 20718-1-AP (TMC1 antibody) at dilution of 1:100 (under 10x lens).



Immunohistochemical analysis of paraffin-embedded human placenta using 20718-1-AP (TMC1 antibody) at dilution of 1:100 (under 40x lens).