

For Research Use Only

PCDH15 Polyclonal antibody

Catalog Number: 20719-1-AP



Basic Information

Catalog Number:

20719-1-AP

Size:

150ul , Concentration: 400 ug/ml by Nanodrop and 367 ug/ml by Bradford method using BSA as the standard;

Source:

Rabbit

Isotype:

IgG

GenBank Accession Number:

NM_033056

GeneID (NCBI):

65217

UNIPROT ID:

Q96QU1

Full Name:

protocadherin 15

Calculated MW:

216 kDa

Observed MW:

120 kDa, 50 kDa

Purification Method:

Antigen affinity purification

Recommended Dilutions:

WB 1:500-1:1000

IF/ICC 1:200-1:800

Applications

Tested Applications:

WB, IF/ICC, ELISA

Species Specificity:

human, mouse, rat

Positive Controls:

WB : mouse brain tissue, mouse liver tissue, rat brain tissue

IF/ICC : HEK-293 cells,

Background Information

Protocadherin-15 (PCDH15) belongs to the cadherin superfamily that mediates calcium-dependent cell-cell adhesion and plays an important role in the maintenance of normal tissue architecture. A homozygous variant in PCDH15 results in Usher syndrome type 1F (USH1F) which leads to congenital hearing loss and syndromic retinitis pigmentosa (PMID: 38014037). Multiple isoforms of PCDH15 have been described, including 216-250 kDa (full-length), 150-180 kDa, 100-120 kDa, 50-65 kDa, and 25-40 kDa (PMID: 22363448; 15928608; 14570705; 23035094; 28883094).

Storage

Storage:

Store at -20°C. Stable for one year after shipment.

Storage Buffer:

PBS with 0.02% sodium azide and 50% glycerol pH 7.3.

Aliquoting is unnecessary for -20°C storage

*** 20ul sizes contain 0.1% BSA

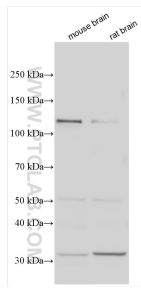
For technical support and original validation data for this product please contact:

T: 1 (888) 4PTGLAB (1-888-478-4522) (toll free in USA), or 1(312) 455-8498 (outside USA)

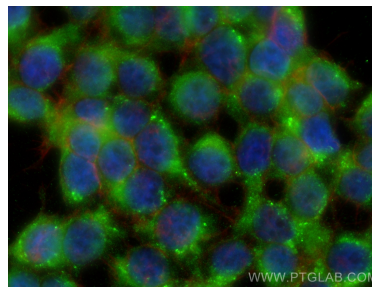
E: proteintech@ptglab.com
W: ptglab.com

This product is exclusively available under Proteintech Group brand and is not available to purchase from any other manufacturer.

Selected Validation Data



mouse brain tissue lysates were subjected to SDS PAGE followed by western blot with 20719-1-AP (PCDH15 antibody) at dilution of 1:800 incubated at room temperature for 1.5 hours.



Immunofluorescent analysis of (-20°C Ethanol) fixed HEK-293 cells using PCDH15 antibody (20719-1-AP) at dilution of 1:400 and CoraLite®488-Conjugated Goat Anti-Rabbit IgG(H+L), CL594-Phalloidin (red).