

For Research Use Only

Claudin 22 Polyclonal antibody

Catalog Number: 20724-1-AP



Basic Information

Catalog Number: 20724-1-AP	GenBank Accession Number: NM_001111319	Purification Method: Antigen affinity purification
Size: 150ul , Concentration: 650 µg/ml by Nanodrop and 353 µg/ml by Bradford method using BSA as the standard;	GeneID (NCBI): 53842	Recommended Dilutions: WB 1:500-1:1000
Source: Rabbit	Full Name: claudin 22	
Isotype: IgG	Calculated MW: 25 kDa	
	Observed MW: 25-30 kDa	

Applications

Tested Applications: WB, ELISA	Positive Controls: WB : HeLa cells, A431 cells
Species Specificity: human	

Background Information

CLDN22 belongs to the claudin family. It plays a major role in tight junction-specific obliteration of the intercellular space, through calcium-independent cell-adhesion activity. The antibody is specific to CLDN22.

Storage

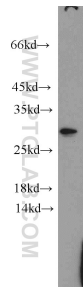
Storage:
Store at -20°C. Stable for one year after shipment.
Storage Buffer:
PBS with 0.02% sodium azide and 50% glycerol pH 7.3.
Aliquoting is unnecessary for -20°C storage

*** 20ul sizes contain 0.1% BSA

For technical support and original validation data for this product please contact:
T: 1 (888) 4PTGLAB (1-888-478-4522) (toll free in USA), or 1(312) 455-8498 (outside USA)
E: proteintech@ptglab.com
W: ptglab.com

This product is exclusively available under Proteintech Group brand and is not available to purchase from any other manufacturer.

Selected Validation Data



HeLa cells were subjected to SDS PAGE followed by western blot with 20724-1-AP (Claudin 22 antibody) at dilution of 1:500 incubated at room temperature for 1.5 hours.