

For Research Use Only

# CFTR Polyclonal antibody, PBS Only

Catalog Number: 20738-1-PBS



## Basic Information

**Catalog Number:**

20738-1-PBS

**Size:**

100ug, Concentration: 1 mg/ml by Nanodrop;

**Source:**

Rabbit

**Isotype:**

IgG

**GenBank Accession Number:**

NM\_000492

**GeneID (NCBI):**

1080

**UNIPROT ID:**

P13569

**Full Name:**

cystic fibrosis transmembrane conductance regulator (ATP-binding cassette sub-family C, member 7)

**Calculated MW:**

168 kDa

**Purification Method:**

Antigen affinity purification

## Applications

**Tested Applications:**

IHC, FC (Intra), Indirect ELISA

**Species Specificity:**

human

## Background Information

CFTR is a member of the ATP-binding cassette (ABC) family of membrane transport proteins, most members of which function as ATP-dependent pumps. CFTR is unique among human ABC proteins in functioning not as a pump, but as an ion channel.

## Storage

**Storage:**

Store at -80°C.

**Storage Buffer:**

PBS only, pH7.3

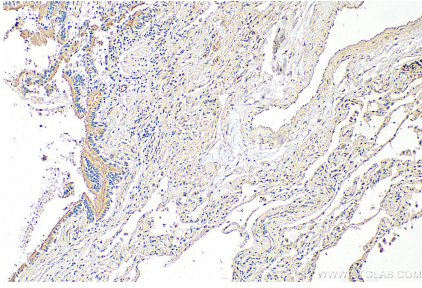
For technical support and original validation data for this product please contact:

T: 1 (888) 4PTGLAB (1-888-478-4522) (toll free in USA), or 1(312) 455-8498 (outside USA)

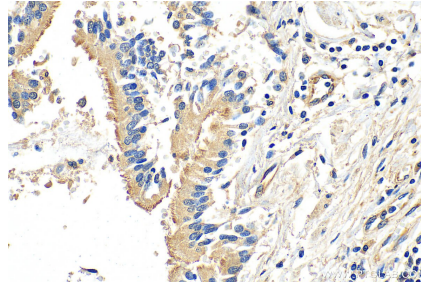
E: [proteintech@ptglab.com](mailto:proteintech@ptglab.com)  
W: [ptglab.com](http://ptglab.com)

**This product is exclusively available under Proteintech Group brand and is not available to purchase from any other manufacturer.**

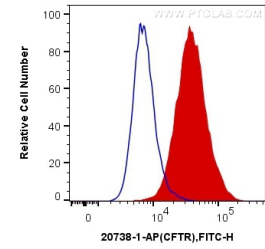
## Selected Validation Data



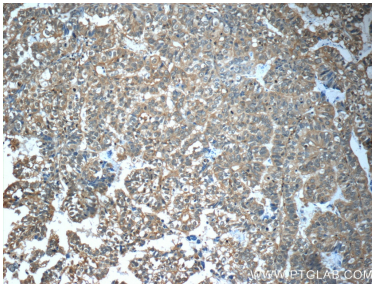
Immunohistochemical analysis of paraffin-embedded human lung tissue slide using 20738-1-AP (CFTR antibody) at dilution of 1:1000 (under 10x lens). Heat mediated antigen retrieval with Tris-EDTA buffer (pH 9.0). This data was developed using the same antibody clone with 20738-1-PBS in a different storage buffer formulation.



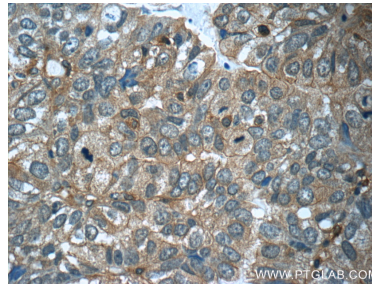
Immunohistochemical analysis of paraffin-embedded human lung tissue slide using 20738-1-AP (CFTR antibody) at dilution of 1:1000 (under 40x lens). Heat mediated antigen retrieval with Tris-EDTA buffer (pH 9.0). This data was developed using the same antibody clone with 20738-1-PBS in a different storage buffer formulation.



1X10<sup>6</sup> HUVEC cells were intracellularly stained with 0.2 ug Anti-Human CFTR (20738-1-AP) (red), or 0.2 ug Control Antibody. Cells were fixed with 4% PFA and permeabilized with Flow Cytometry Perm Buffer (PF00011-C). This data was developed using the same antibody clone with 20738-1-PBS in a different storage buffer formulation.



Immunohistochemical analysis of paraffin-embedded human breast cancer tissue slide using 20738-1-AP (CFTR Antibody) at dilution of 1:50 (under 10x lens). This data was developed using the same antibody clone with 20738-1-PBS in a different storage buffer formulation.



Immunohistochemical analysis of paraffin-embedded human breast cancer tissue slide using 20738-1-AP (CFTR Antibody) at dilution of 1:50 (under 40x lens). This data was developed using the same antibody clone with 20738-1-PBS in a different storage buffer formulation.