

For Research Use Only

ARX Polyclonal antibody

Catalog Number: 20739-1-AP



Basic Information

Catalog Number:

20739-1-AP

Size:

150ul , Concentration: 400 ug/ml by Nanodrop and 280 ug/ml by Bradford method using BSA as the standard;

Source:

Rabbit

Isotype:

IgG

GenBank Accession Number:

NM_139058

GeneID (NCBI):

170302

UNIPROT ID:

Q96QS3

Full Name:

aristaless related homeobox

Calculated MW:

58 kDa

Observed MW:

58 kDa

Purification Method:

Antigen affinity purification

Recommended Dilutions:

WB 1:200-1:1000

Applications

Tested Applications:

WB, ELISA

Species Specificity:

human, mouse

Positive Controls:

WB : NIH/3T3 cells, SH-SY5Y cells

Background Information

ARX belongs to the paired homeobox family and Bicoid subfamily. It is a transcription factor which required for normal brain development. ARX may be important for maintenance of specific neuronal subtypes in the cerebral cortex and axonal guidance in the floor plate. Defects in ARX are the cause of lissencephaly X-linked type 2 (LISX2), epileptic encephalopathy early infantile type 1 (EIEE1), Partington syndrome (PRTS), mental retardation X-linked ARX-related (MRXARX), and agenesis of the corpus callosum with abnormal genitalia (ACCAG). The antibody is specific to ARX. This is a rabbit polyclonal antibody raised against a peptide mapping within human ARX.

Storage

Storage:

Store at -20°C. Stable for one year after shipment.

Storage Buffer:

PBS with 0.02% sodium azide and 50% glycerol pH 7.3.

Aliquoting is unnecessary for -20°C storage

*** 20ul sizes contain 0.1% BSA

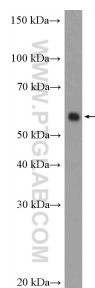
For technical support and original validation data for this product please contact:

T: 1 (888) 4PTGLAB (1-888-478-4522) (toll free in USA), or 1(312) 455-8498 (outside USA)

E: proteintech@ptglab.com
W: ptglab.com

This product is exclusively available under Proteintech Group brand and is not available to purchase from any other manufacturer.

Selected Validation Data



NIH/3T3 cells were subjected to SDS PAGE followed by western blot with 20739-1-AP (ARX Antibody) at dilution of 1:300 incubated at room temperature for 1.5 hours.