

For Research Use Only

TRAPPC5 Polyclonal antibody

Catalog Number: 20752-1-AP



Basic Information

| | | |
|---|---|--|
| Catalog Number: 20752-1-AP | GenBank Accession Number: BC042161 | Purification Method: Antigen affinity purification |
| Size: 150ul , Concentration: 450 ug/ml by Nanodrop; | GeneID (NCBI): 126003 | Recommended Dilutions: WB 1:1000-1:8000 |
| Source: Rabbit | UNIPROT ID: Q8IURO | |
| Isotype: IgG | Full Name: trafficking protein particle complex 5 | |
| Immunogen Catalog Number: AG13185 | Calculated MW: 188 aa, 21 kDa | |
| | Observed MW: 21-23 kDa | |

Applications

| | |
|--|--|
| Tested Applications: WB, ELISA | Positive Controls: WB : HEK-293 cells, HepG2 cells, PC-3 cells |
| Species Specificity: human | |

Background Information

Transport protein particle (TRAPP, also known as trafficking protein particle), a multimeric guanine nucleotide-exchange factor, regulates multiple membrane trafficking pathways (PMID: 20966969). TRAPPC5 is a component of the TRAPP complexes and is involved in processes such as intracellular vesicle transport. In hepatocellular carcinoma, upregulated expression of TRAPPC5 can enhance cancer cell proliferation, migration, invasion and epithelial-mesenchymal transition (EMT) and promote tumorigenesis (PMID: 35425722).

Storage

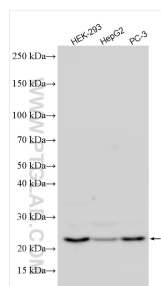
Storage:
Store at -20°C. Stable for one year after shipment.
Storage Buffer:
PBS with 0.02% sodium azide and 50% glycerol pH 7.3.
Aliquoting is unnecessary for -20°C storage

*** 20ul sizes contain 0.1% BSA

For technical support and original validation data for this product please contact:
T: 1 (888) 4PTGLAB (1-888-478-4522) (toll free in USA), or 1(312) 455-8498 (outside USA)
E: proteintech@ptglab.com
W: ptglab.com

This product is exclusively available under Proteintech Group brand and is not available to purchase from any other manufacturer.

Selected Validation Data



Various lysates were subjected to SDS PAGE followed by western blot with 20752-1-AP (TRAPPC5 antibody) at dilution of 1:4000 incubated at room temperature for 1.5 hours.