

For Research Use Only

# ADAM20 Polyclonal antibody

Catalog Number: 20755-1-AP



## Basic Information

### Catalog Number:

20755-1-AP

### Size:

150ul, Concentration: 500 ug/ml by Nanodrop;

### Source:

Rabbit

### Isotype:

IgG

### Immunogen Catalog Number:

AG14493

### GenBank Accession Number:

BC025378

### GeneID (NCBI):

8748

### UNIPROT ID:

O43506

### Full Name:

ADAM metalloproteinase domain 20

### Calculated MW:

776 aa, 87 kDa

### Observed MW:

70-80 kDa

### Purification Method:

Antigen affinity purification

### Recommended Dilutions:

WB 1:500-1:1000

## Applications

### Tested Applications:

WB, ELISA

### Species Specificity:

human, mouse

### Positive Controls:

WB : HeLa cells, PC-3 cells, mouse brain tissue

## Background Information

ADAM20 is the functional equivalent of sperm fertilin-alpha (ADAM1), since that gene is nonfunctional in human. And northern blot analysis detected the 2.8-kb ADAM20 mRNA only in testis. The exclusive expression of ADAM20 in human testis and their sequence similarity with the fertilins suggest that it is expressed on sperm cells and involved in sperm maturation and/or fertilization (PMID:9469942). The full length protein has a signal peptide, propeptide and 6 glycosylation sites.

## Storage

### Storage:

Store at -20°C. Stable for one year after shipment.

### Storage Buffer:

PBS with 0.02% sodium azide and 50% glycerol pH 7.3.

Aliquoting is unnecessary for -20°C storage

\*\*\* 20ul sizes contain 0.1% BSA

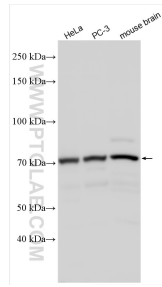
For technical support and original validation data for this product please contact:

T: 1 (888) 4PTGLAB (1-888-478-4522) (toll free in USA), or 1(312) 455-8498 (outside USA)

E: [proteintech@ptglab.com](mailto:proteintech@ptglab.com)  
W: [ptglab.com](http://ptglab.com)

This product is exclusively available under Proteintech Group brand and is not available to purchase from any other manufacturer.

## Selected Validation Data



Various lysates were subjected to SDS PAGE followed by western blot with 20755-1-AP (ADAM20 antibody) at dilution of 1:800 incubated at room temperature for 1.5 hours.